

# PARTITION WALLS

2019

# **PARTITION WALLS**

2019



V14-10 Double glazed partition

<b>SKY SYSTEM</b>	<b>11</b>
SKY 30	20
UNIGLASS	22
SKY 60	24
<b>VITRUM SYSTEM</b>	<b>27</b>
V10	35
V6	40
<b>DIVIDO SYSTEM</b>	<b>47</b>
PANEL	54
TWINGLASS	56
GLASS	60
UNIGLASS	62
<b>DOORS</b>	<b>65</b>

SKY

SKY este un sistem de compartimentare simplu placat realizat prin imbinarea cant in cant a panourilor de sticla, fara montanti intermediari verticali.

Panourile din geam securizat sau laminat sunt montate si fixate la partea superioara si inferioara in profile din aluminiu. Intre panouri, pe verticala, izolarea este asigurata de profile din policarbonat transparent, banda siliconica, sau profile inguste din aluminiu care au aceeasi grosime ca si cea a sticlei.

Sistemul SKY este un sistem de compartimentare neportant, care separa si izoleaza spatii interioare intr-o cladire, asigurand maximul de transparenta. Sistemul de compartimentare Sky este proiectat si dezvoltat ca prin forma, dimensiuni, solutii tehnice si posibilitati de montaj sa atinga cele mai inalte cerintele estetice si functionale, asigurand bune performante acustice.

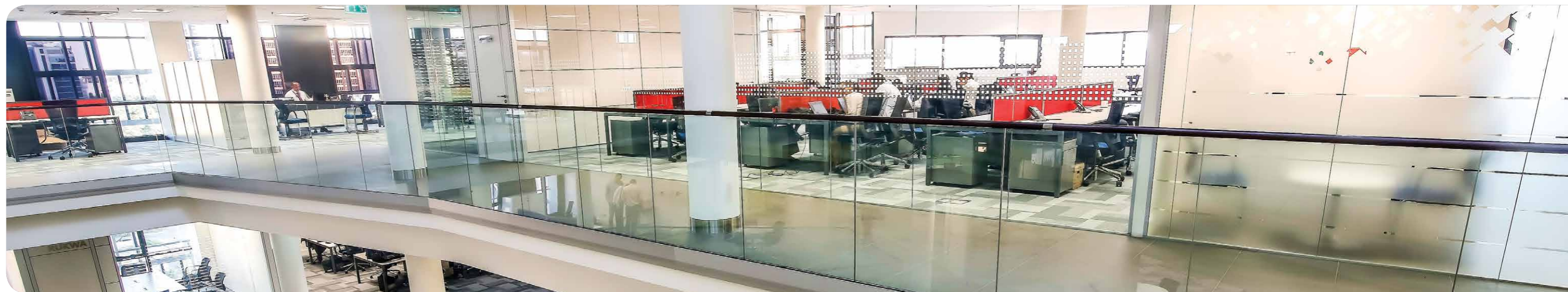
Proiectarea sistemului de compartimentare Sky a fost realizata pornind de la dorinta de a transforma un simplu perete din sticla in ceva atragator din punct estetic si care, prin calitatile functionale, sa ne ajute sa crestem calitatea mediului in care traim si muncim.

SKY single glazed partitioning system made with an edge - to - edge connection of the glass panels, with no vertical intermediate pillars.

The tempered or laminated glass panels are mounted and fixed at the top and bottom part in aluminum profiles. Between the glass panels, vertically, the isolation is ensured by transparent polycarbonate profiles, silicone tape, or narrow aluminum profiles, which have the same thickness as that of the glass.

SKY system is a non-loadbearing partitioning system, separating and isolating the interior areas of a building, providing maximum transparency. Sky partitioning system is designed and developed as by the form, sizes, technical solutions and possibilities of assembly, to achieve the highest aesthetic and functional demands, providing good acoustic performances.

The design of the Sky partitioning system was developed starting from the desire to transform a simple glass wall into something appealing in terms of aesthetics and, through functional qualities, to help us increase the quality of the environment in which we live and work.



Single glazed Sky glass system combined with Divido acoustic panels

SKY este un sistem de compartimentare realizat prin imbinarea cant in cant a panourilor dintr-o singura foaie de sticla, fara montanti intermediari verticali. Geamul utilizat float standard sau ultraclear are grosimea de 10 sau 12 mm si este securizat sau laminat. Profilele de fixare a panourilor de sticla pe tavan si pe pardoseala sunt extrudate din aliaje de aluminiu si sunt finisate prin anodizare sau vopsire cu pulberi in camp electrostatic. Profilele de fixare montate pe verticala sunt utilizate numai la inceputul si sfarsitul peretelui de compartimentare.

Cresterea stabilitatii structurii si izolarea se realizeaza prin montarea intre panourile din sticla a unei benzi siliconice, un profil din policarbonat transparent sau un profil ingust din aluminiu, toate acestea avand aceeasi grosime cu cea a sticlei. Tehnologia utilizata pentru imbinarea pe verticala a panourilor creste semnificativ stabilitatea structurii si rezistenta la socuri aplicate in plan orizontal.

SKY is a partitioning system made by edge - to - edge combination of the panels of a single glass sheet, without vertical intermediate pillars. The glass used is standard float glass or ultra-clear glass, 10 or 12 mm thick and it is secured or laminated. The fixing profiles of the glass panels on the ceiling and on the floor are made of extruded aluminum alloy and are finished by anodizing or painting with powders in electrostatic field. The fixing profiles mounted vertically are used only at the beginning and end of the partitioning wall.

The increase in the stability of the structure and sound isolation shall be achieved by mounting a silicone band, a polycarbonate transparent profile or a narrow aluminum profile, between the glass panels, all having the same thickness as that of the glass. The technology used for the vertical joining of the panels significantly increases the stability of the structure and resistance to shocks that are applied in the horizontal plane.

Tocurile de usa sunt realizate din profile extrudate din aluminiu si sunt proiectate pentru a permite o integrare usoara a usilor in peretele de compartimentare. Imbinarea la colturi a tocului se face cu coltare, care asigura o aliniere perfecta si o strangere ferma a profilelor. Pe tocul partitiei SKY pot fi montate usi din lemn, usi din sticla simpla sau usi din sticla dubla. Foaia de usa este pozitionata la fata tocului pe partea opusa balamalelor. Garnitura coextrudata montata pe toc este proiectata pentru a asigura o buna izolare fonica.

Tocul asigura posibilitatea utilizarii accesoriilor de tip amortizor, prag cazator, placuta electromagnetica, broasca electromagnetica, cititor de card etc. Pentru proiecte cu cerinte estetice speciale, tocul din aluminiu poate fi inlocuit cu un toc din lemn.

Un mare avantaj al peretilor de compartimentare SKY este reprezentata de posibilitatea de a integra panouri tehnice din lemn, metal sau din sticla opaca, in care se pot instala prize, intreruptoare, cititoare de card, echipamente pentru controlul climatizarii.

Prin posibilitatea de combinare cu toate celelalte sisteme de compartimentare TECHO se pot realiza proiecte complexe, in care, in cadrul unui perete, se regasesc atat pereti SKY cu un geam simplu cat si pereti Vitrum cu geam dublu sau un perete opac Divido. Combinarea lor se face firesc, cu elemente de trecere de la un sistem la altul proiectate special pentru acest scop.

Elementele componente ale sistemului SKY sunt prelucrate si taiate la dimensiune conform cerintelor fiecarui proiect.

Sistemul Sky permite relocarea peretilor si reutilizarea elementelor fara reparatii substantiale. Peretii de compartimentare pot fi relocati pe un nou amplasament numai daca noile cote se incadreaza in limita de toleranta a sistemului.

The door frames are made of extruded aluminum profiles and are designed to allow for easy integration of the door in the partitioning wall. The corner connection for the frame is made with corner joints, which ensure a perfect alignment and a firm assemblage of the profiles. On the SKY partition frame can be installed wooden doors, simple glazed glass doors and double glazed glass doors. The door leaf is placed at the front of the frame on the side opposite to the hinges. The co-extruded gasket mounted on the frame is designed to provide good sound insulation.

The frame ensures the possibility to integrate a floor-concealed door closer, automatic door seal, electromagnetic plate, electromagnetic lock, card reader etc. For projects with special aesthetic requirements, the aluminum frame can be replaced with a wooden frame.

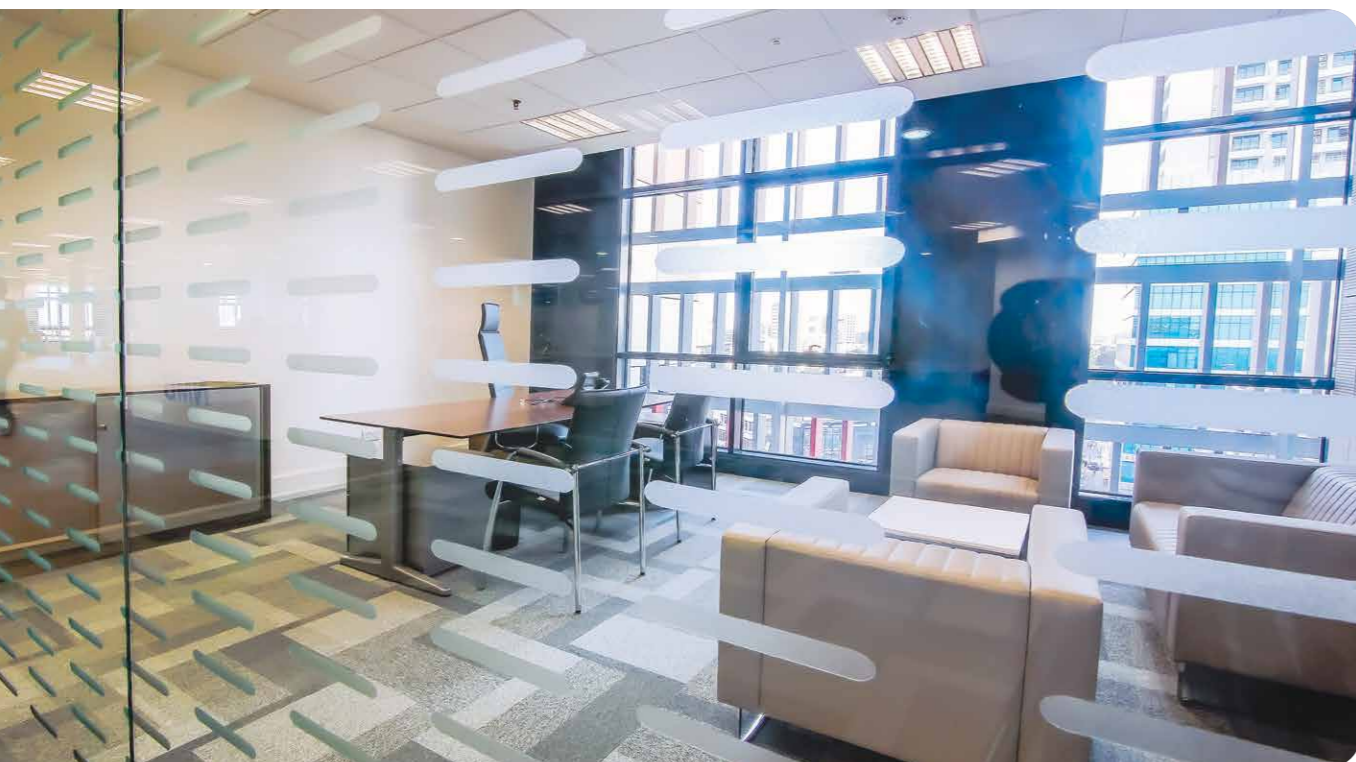
A great advantage of the SKY partitioning walls is represented by the possibility to install technical panels made of wood, metal or opaque glass, in which one can install plugs, switches, card readers, and climate control equipment.

With the possibility of combining with all other TECHO partitioning systems, complex projects can be achieved, in which, within a wall, can be found both SKY partitions with simple glass, Vitrum partitions with double glass or Divido opaque partitions. And their combination is made naturally, with elements passing from one system to another, specially designed for this purpose.

The components of the SKY system are processed and cut to size based to the requirements of each project.

Sky system allows walls relocation and reuse of elements without substantial repairs. Partitioning walls can be relocated to a new location only if the new quotas fall within the tolerance limits of the system.

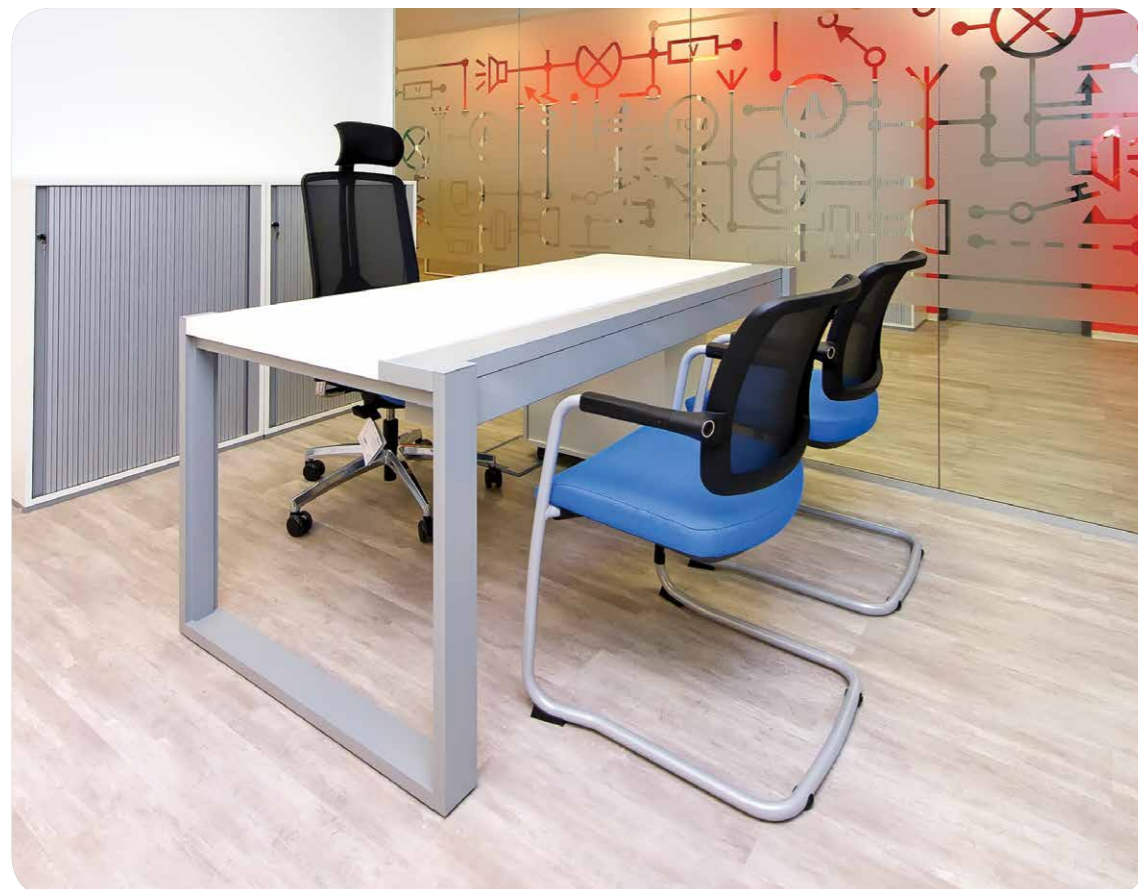
Connection between 2 glass panels with self-adhesive tape



Single glazed glass partition with technical module

Tip constructie	Simplu placat
Profile fixare de aluminiu - dimensiuni	Inaltime: SKY 30: - 30mm Uniglass: - 40mm SKY 60: - 60 - 50mm Grosimea: SKY 30: - 24mm Uniglass: - 30mm SKY 60: - 50mm
Latimea tocului de usa	53mm pentru toc 12449 100mm pentru toc 33760 (pentru constructii cu panou tehnic)
Inaltimea maxima a peretelui de sticla	SKY 30 si SKY 60 - 3000mm SKY Uniglass - 3450mm
Latimea modulelor de sticla	300 - 1300mm
Greutatea medie	25-35kg/mp.
Tipuri de imbinari intre panourile de sticla	Banda siliconica dublu adeziva - culoare neagra (optional transparenta) Profil din policarbonat transparent Profil ingust - 10mm din aluminiu - forma "I". Finisaj-anodised gri
Tipuri de sticla utilizata	Sticla securizata 10mm;12mm Sticla laminata 10,38mm; 12,38mm Sticla acustica laminata 12,76mm
Tipuri de tocuri	Toc din aluminiu; Toc din lemn
Grosimea usi de sticla	8mm; 10mm; 12mm
Grosimea usilor din lemn	41mm; 55mm
Grosimea usilor cu sticla dubla	41mm; 55mm
Toleranta - pe inaltime si latime	+/- 10 mm
Izolatie acustica	35 - 38 dB

Single glazed glass partition Sky30 system



Construction type	Single glazing
Fixing aluminum profile - sizes	Height: SKY 30: - 30mm Uniglass: - 40mm SKY 60: - 60 - 50mm Thickness: SKY 30: - 24mm Uniglass: - 30mm SKY 60: - 50mm
Door frame depth	53mm for the 12449 frame 100mm for the 33760 frame (for constructions with technical panel)
Maximum height of the glass wall	SKY 30 and SKY 60: - 3000mm SKY Uniglass: - 3450mm
Width of the glass modules	300 - 1300mm
Average weight	25-35kg/mp.
Types of connections between glass panels	Double adhesive silicone tape Black (optional transparent) Transparent polycarbonate profile Narrow profile - 10 mm of aluminum -shape "I". Finish - anodized grey
Types of glass panels	Tempered glass 10mm;12mm Laminated glass 10,38mm; 12,38mm Laminated acoustic glass 12,76mm
Types of frames	Aluminum frame; Wooden frame
Thickness of the glass doors	8mm; 10mm; 12mm
Thickness of the wooden doors	41mm; 55mm
Thickness of doors with double glass	41mm; 55mm
Tolerances	+/- 10 mm in height and width
Soundproofing	35 - 38 dB

Single glazed Uniglass system with Divido opaque modules







## SKY 30

SKY 30 este un sistem de compartimentare simplu placat, neportant, realizat prin imbinarea cant in cant a panourilor de sticla, fara montanti intermediari verticali. Geamul float standard sau ultraclear are grosimea de 10 mm si este securizat sau laminat.

Panourile din geam securizat sau laminat sunt montate si fixate perimetral in profile din aluminiu. Intre panouri, pe verticala, izolarea este asigurata de profile din policarbonat transparent, banda siliconica, sau profile inguste din aluminiu care au aceeasi grosime ca si cea a sticlei.

Profilele de fixare a panourilor de sticla sunt profile extrudate din aliaje de aluminiu. Profilele sunt prinse pe tavan si pe pardoseala si asigura preluarea miscarilor tavanului si a pardoselii precum si preluarea diferentelor de paralelism intre cele doua suprafete in limita unei tolerante de +/-10mm.

Latime profile perimetrare din aluminiu vizibile:	Profil superior: profil canal U dimensiuni vizibile cu inaltimea de 30mm si latimea de 24mm Profil inferior: profil de baza si profil capac de fixare - dimensiuni vizibile cu inaltimea de 30mm si latimea de 24mm
Garnituri:	Garnitura coextrudata montata ascuns in profilul de aluminiu. Garnitura nu este vizibila
Finisajul suprafetelor:	Finisare standard - aluminiu anodizat gri EV1 Alte finisaje disponibile: vopsire in camp electrostatic RAL, anodizare in culori speciale (negru, bronz, auriu, inox)
Tipuri de sticla:	Geamul float standard sau ultraclear securizat de 10mm, geam laminat 10,38mm, geam laminat acustic 10,76mm
Inaltimea maxima	3000 mm
Tolerante	+/-10mm pe inaltime si latime
Izolare acustica	Geam securizat 10mm- Rw = 35 dB Geam acustic laminat - Rw = 38 dB
Protectie la foc	Nu

## SKY 30

SKY single glazed partition system made with an edge - to - edge connection of the glass panels, with no vertical intermediate pillars. Standard float glass or ultra-clear glass is 10 mm thick and it can be tempered or laminated.

The glass panels are mounted and fixed in perimetral aluminum profiles. Between the glass panels, vertically, the isolation is ensured by transparent polycarbonate profiles, silicone tape, or narrow aluminum profiles, which have the same thickness as that of the glass.

The fixing profiles of the glass panels are extruded panels of aluminum alloys. The profiles are attached to the ceiling and floor and provide the taking over of the ceiling and floor movements as well as the taking over of parallelism differences between the two surfaces within a tolerance of +/-10mm.

Visible width aluminium perimetral profiles:	Superior profile - channel profile U, visible sizes with a height of 30 mm and width of 24 mm Inferior profile - basic profile and cover profile - visible sizes - height of 30 mm and width of 24 mm
Gaskets	Coextruded gasket mounted concealed in the aluminum profile. The gasket is not visible
Surface finish	Standard finish -grey anodized, EV1 other available finishes: RAL painting in electrostatic field, anodizing in special colors (black, bronze, gold, stainless steel)
Glass types	Standard float glass or ultra-clear tempered glass - 10mm, laminated glass 10.38 mm, acoustic laminated glass 10.76 mm
Maximum height	3000 mm
Tolerances	+/-10mm in height and width
Soundproofing	Tempered glass 10 mm-Rw = 35 dB Laminated acoustic glass - Rw = 38 dB
Fire protection	No



Single glazed glass partition Sky30 system



Single glazed glass partition Sky30 system



Single glazed glass partition Sky30 system



Single glazed glass partition Sky30 system with technical module and glass door



Single glazed glass partition Sky30 system, with technical module and single glazed doors

## SKY UNIGLASS

SKY uniglass este un sistem de compartimentare neportant realizat prin imbinarea cant in cant a panourilor dintr-o singura foaie de sticla, fara montanti intermediari verticali. Geamul float standard sau ultraclear are grosimea de 8/10/12 mm si este securizat sau securizat si laminat. Panourile din sticla sunt montate si fixate perimetral in profile din aluminiu. Intre panourile de sticla, pe verticala, izolarea este asigurata de profile din policarbonat transparent, banda siliconica, sau profile inguste din aluminiu, care au aceeasi grosime cu cea a sticlei. Profilele de fixare a panourilor de sticla sunt profile extrudate din aliaje de aluminiu. Profilele sunt prinse pe tavan si pe pardoseala si asigura preluarea miscarilor tavanului si a pardoselii precum si preluarea diferentelor de paralelism intre cele doua suprafete in limita unei tolerante de +/-10mm. Profilul Uniglass asigura o fixare foarte ferma a sticlei, care este prinsa intre profilul de baza continuu si clema de strangere prin intermediul unui surub. Clema de strangere are o pozitie reglabila pe toata lungimea profilului si prin aceasta caracteristica pierderile de material sunt reduse. Pentru fixari mai puternice se pot adauga mai multe cleme de strangere care pot culisa in lungul profilului pentru a fi pozitionate in locul dorit. Proiectarea corecta a capacelor de clipsare permite demontarea lor fara deteriorarea suprafetelor si asigura relocarea partitiei cu pierderi reduse de material.

Latime profile perimetrare din aluminiu vizibile:	Profil de baza continuu cu canal in care gliseaza piulite de care se fixeaza clema de strangere. Profil de tip capac clipsat pe profilul de baza si clemele de strangere. Inaltimea de 40mm si latimea de 30mm
Garnituri:	Garnitura adeziva cu indice mare de frecare
Finisajul suprafetelor:	Finisare standard - aluminiu anodizat gri EV1, Alte finisaje disponibile: vopsire in camp electrostatic RAL, anodizare in culori speciale (negru, bronz, auriu, inox)
Tipuri de sticla:	Geamul float standard sau ultraclear securizat de 8/10/12mm. Geam securizat si laminat 10,38mm; 12,38mm. Geam securizat si laminat acustic 10.76mm; 12.76mm.
Inaltimea maxima:	3450 mm
Tolerante	+/-10mm pe inaltime si latime
Izolarea acustica	Netestat
Protectie la foc	Nu

## SKY UNIGLASS

SKY uniglass is a non-loadbearing partitioning system made by edge-to-edge joining of the panels of a single glass sheet, without vertical intermediate pillars. Standard float glass or ultra-clear glass is 8/10/12 mm thick and is tempered or tempered and laminated. The glass panels are mounted and fixed marginally in aluminum profiles; between panels, vertically, the isolation is ensured by transparent polycarbonate profiles, silicone tape, or narrow aluminum profiles, which have the same thickness as that of the glass. The fixing profiles of the glass panels are extruded panels of aluminum alloys. The profiles are attached to the ceiling and floor and ceiling and provide the taking over of the ceiling and floor movements as well as the taking over of parallelism differences between the two surfaces within a tolerance of +/-10mm. Uniglass profile ensures a very firm fixation of the glass, which is caught between the continuous basic profile and the tightening clamp by means of a screw. The tightening clamp has an adjustable position on the entire length of the profile and by this feature, the material losses are reduced. For stronger fixing, one can add more tightening clamps that can slide along the profile to be positioned in the desired location. The correct design of the clipping covers allows their demounting without damage to surfaces and provide the relocation of the partition with reduced loss of material.

Fixing profiles:	Continuous base profile with channel in which screw nut slides and the clamps are fixed. Profile clipping cover type is fixed on the base profile and tightening clamps. Height of 40 mm and width of 30 mm
Gaskets	Self-adhesive gasket with a high friction index
Surface finish:	Standard finish - anodized grey, EV1 Other available finishes: painted in electrostatic field in RAL colors, anodized in special colors (black, bronze, gold, stainless steel)
Glass types:	Standard float or ultra-clear tempered glass 8/10/12mm thick. Tempered and laminated glass 10,38mm; 12,38mm. Tempered and laminated acoustic glass 10,76mm; 12,76mm
Maximum height	3450 mm
Tolerances	+/-10mm in height and width
Soundproofing	Untested
Fire protection	No



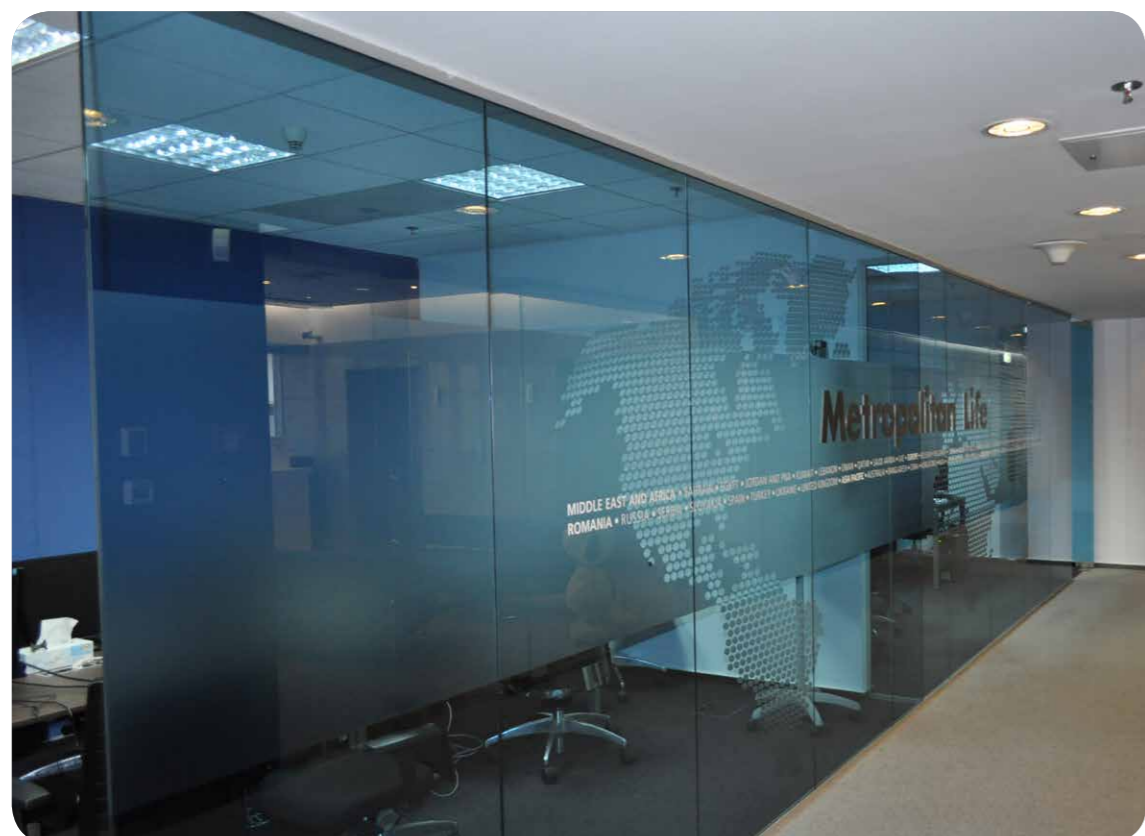
Sky Uniglass system



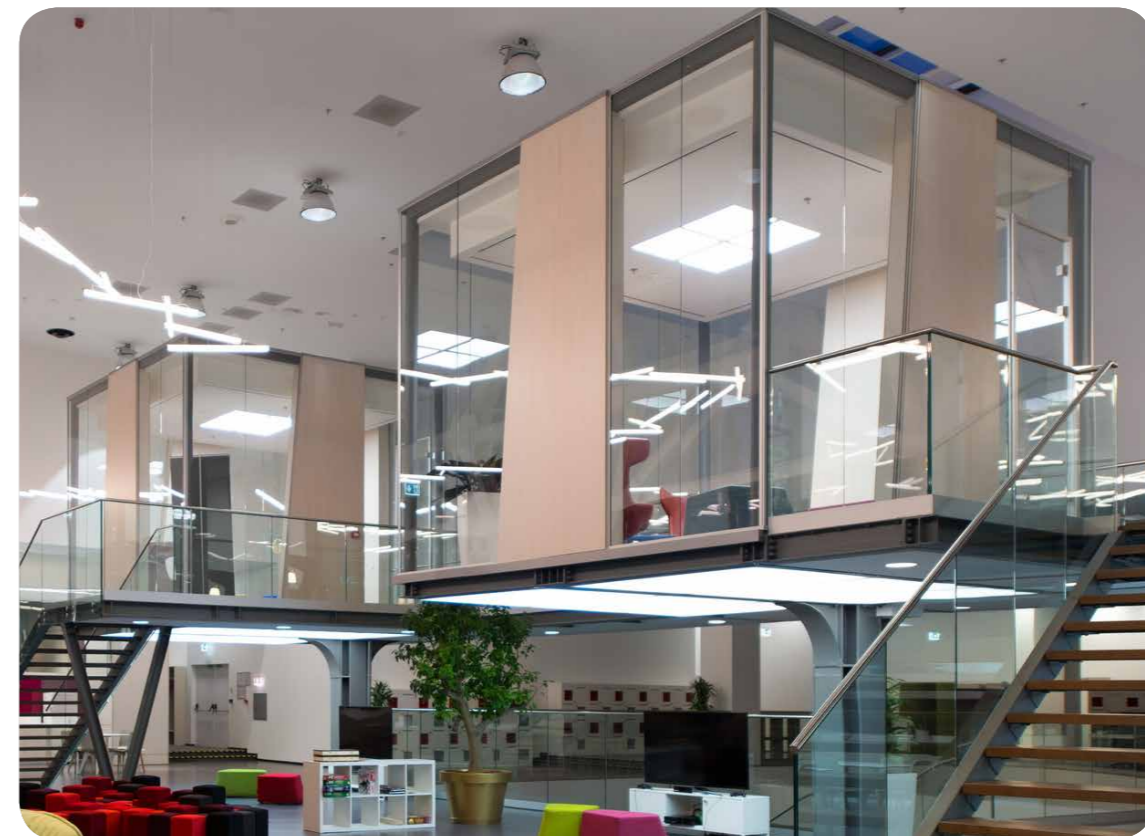
Single glazed glass partition Sky Uniglass system with Divido Panel modules



Single glazed glass partition Sky Uniglass system with opaque double glazed Divido Panel



Single glazed glass partition Sky Uniglass system



Single glazed glass partition Sky Uniglass system with opaque double glazed Divido Panel

# WIRBURN

Vitrum este o gama de pereti de compartimentare proiectati si dezvoltati de Arcade (TECHO) pentru a oferi utilizatorilor, intr-un singur sistem, o gama mare de solutii din punct de vedere al functionalitatilor, materialelor si tehnologiei. Transparenta, eleganta, versatilitatea, flexibilitatea si izolarea fonica sunt obiectivele pe care le-am avut in vedere in proiectarea si dezvoltarea peretilor de compartimentare Vitrum.

Vitrum este, in primul rand, un perete de compartimentare din sticla dubla, dar versatilitatea si flexibilitatea sistemului permite combinarea pe verticala sau orizontala a panourilor de sticla si a panourilor pline. Iar multitudinea de solutii da libertate deplina pentru a realiza spatii impartite eficient, spatii cu o estetica in concordanta cu cerintele cele mai inalte si spatii puternic individualizate prin gama mare de materiale si solutii tehnice ce pot fi folosite.

Fie ca este folosit pentru a realiza o sala de intalnire, un birou cu o izolare fonica mai inalta sau o galagioasa sala de mese, peretii de compartimentare VITRUM asigura o izolare fonica foarte buna de pana la 47 dB si in acelasi timp transparenta si luminozitate.

Intre cele doua foi de sticla ale sistemului se pot monta jaluzele cu latimea de 25 mm. Sistemul Vitrum se poate combina cu usi, elementele de legatura si parti componente ale tuturor peretilor de compartimentare TECHO.

Vitrum is a line of partition walls designed and developed by Arcade (TECHO) to provide users, in a single system, a large range of solutions in terms of functionality, materials and technology.

Transparency, elegance, versatility, flexibility and sound insulation are the goals that we considered in the design and development of the Vitrum partition system.

Vitrum is, primarily, a double glazed partition but the versatility and flexibility of the system allows the vertical or horizontal combination of the glass panels and of the blind panels. The multitude of solutions gives you complete freedom to achieve efficiently divided spaces, spaces with an aesthetic in accordance with the highest requirements and strongly individualistic spaces through the great range of materials and technical solutions that can be used.

Whether it is used to create a meeting room, an office with a higher sound insulation or a noisy dining room, VITRUM system provide very good sound insulation of up to 47 dB, and at the same time, a high transparency and brightness.

Between the two glass sheets of the system, one can install blinds of 25mm width. The Vitrum system may be combined with doors, connection elements and components of all TECHO partitioning walls.

Double glazed V10 system with technical modules and DG doors



Tocurile de usa sunt realizate din profile extrudate din aluminiu si sunt proiectate pentru a permite o integrare usoara a usilor in peretele de compartimentare. Imbinarea la colturi a tocului se face cu coltare, care asigura o aliniere perfecta si o strangere ferma a profilelor. Pe tocul partitiei VITRUM pot fi montate usi din lemn, usi din sticla simpla sau usi din sticla dubla. Foaia de usa este pozitionata la fata tocului pe partea opusa balamalelor. Garnitura coextrudata montata pe toc este proiectata pentru a asigura o buna izolare fonica.

Tocul asigura posibilitatea utilizarii accesoriilor de tip amortizor, prag automat, placuta electromagnetica, broasca electromagnetica, cititor de card etc. Pentru proiecte cu cerinte estetice speciale, tocul din aluminiu poate fi inlocuit cu un toc din lemn.

Langa tocul usii sau integrat in tocul usii este posibila instalarea panourilor tehnice din lemn, metal sau din sticla opaca, in care se pot instala prize, intrerupatoare, cititoare de card, echipamente pentru controlul climatizarii. Prin posibilitatea de combinare cu toate celelalte sisteme de compartimentare TECHO se pot realiza proiecte complexe, in care, in cadrul unui perete, se regasesc pereti SKY cu un geam simplu, pereti Vitrum cu geam dublu sau un perete opac -Divido iar combinarea lor se face firesc, cu elemente de trecere de la un sistem la altul proiectate special pentru acest scop.

Elementele componente ale sistemului Vitrum sunt prelucrate si taiate la dimensiune conform cerintelor fiecarui proiect.

Sistemul Vitrum permite relocarea peretilor si reutilizarea elementelor fara reparatii substantiale. Peretii de compartimentare pot fi relocati pe un nou amplasament numai daca noile cote se incadreaza in limita de toleranta a sistemului de +/-11 mm pentru fiecare din prinderile superioara, inferioara si laterala.

The door frames are made of extruded aluminum profiles and are designed to allow for easy integration of the door in the partitioning wall. The corner connection for the frame is made with corner joints, which ensure a perfect alignment and a firm assemblage of the profiles. On the VITRUM partition frame can be installed wooden doors, simple glazed glass doors and double glazed glass doors. The door leaf is placed at the front of the frame on the side opposite to the hinges. The co-extruded gasket mounted on the frame is designed to provide good sound insulation.

The frame ensures the possibility to integrate a floor-concealed door closer, automatic door seal, electromagnetic plate, electromagnetic lock, card reader etc. For projects with special aesthetic requirements, the aluminum frame can be replaced with a wooden frame.

Next to the door frame or into the door frame, it is possible to install technical panels made of wood, metal or opaque glass, in which one can install plugs, switches, card readers, and climate control equipment.

With the possibility of combining with all other TECHO partitioning systems, complex projects can be achieved, in which, within a wall, can be found both SKY partitions with simple glass, Vitrum partitions with double glass or Divido opaque partitions. And their combination is made naturally, with elements passing from one system to another, specially designed for this purpose.

The components of the VITRUM system are processed and cut to size based to the requirements of each project.

Vitrum system allows walls relocation and reuse of elements without substantial repairs. Partitioning walls can be relocated to a new location only if the new quotas fall within the tolerance limits of the system of +/- 11 mm for each of the superior, inferior and lateral fixing places.



Double glazed glass partition V10 system

Tip constructie	Dublu placat
Profil de montaj - dimensiuni	Inaltime: V10 - 33 - 48mm V6 - 33 - 48mm Grosimea: V10 - 100mm V6 - 100mm
Latimea tocului de usa	100mm pentru toc 33760 (pentru constructii cu panou tehnic)
Inaltimea maxima a peretelui de sticla	V10 - 3000-3450mm V6 - 3000mm
Latimea modulelor de sticla	300 - 1500mm
Greutatea medie	52-56kg/mp
Tipuri de imbinari intre panourile de sticla	Banda siliconica dublu adeziva. Culoare negru (optional transparenta) Profil din policarbonat transparent Montanti intermediari de aluminiu. Finisaj - anodised gri
Tipuri de sticla utilizata	Sticla securizata 6mm; 8mm; 10mm Sticla securizata si laminata 6,38mm; 10,38mm Sticla securizata si laminata acutica 12,76mm
Tipuri de tocuri	Toc din aluminiu; Toc din lemn
Grosimea usii de sticla	8mm; 10mm;
Grosimea usilor din lemn	41mm; 55mm
Grosimea usilor cu sticla dubla	41mm; 55mm; 100mm
Toleranta - pe inaltime si latime	+/- 10 mm
Izolarea acustica	41 - 47 dB

Construction type	Double glazed
Mounting profile - sizes	Height: V10 - 33 - 48mm V6 - 33 - 48mm Thickness: V10 - 100mm V6 - 100mm
Door frame width	100mm for the 33760 frame (for technical panel constructions)
Maximum height of the glass wall	V10 - 3000mm V6 - 3000mm
Width of the glass modules	300 - 1500mm
Average weight	52-56kg/mp
Types of connections between glass panels	Double adhesive silicone tape Black (optional transparency) Transparent polycarbonate profile Aluminium mullions. Finish - anodized grey
Types of glass panels	Tempered glass 6mm; 8mm; 10mm Tempered and laminated glass 6,38mm; 10,38mm Tempered acoustic laminated glass 12,76mm
Types of frames	Aluminum frame; Wooden frame
Thickness of the glass doors	8mm; 10mm;
Thickness of the wooden doors	41mm; 55mm
Thickness of doors with double glass	41mm; 55mm; 100mm
Tolerance - on height and width	+/- 10 mm
Soundproofing	41 - 47 dB



Double glazed glass partition V10 system





Double glazed V10 with interior blinds, DG door and technical module

## VITRUM V10

VITRUM V10 este un sistem de compartimentare neportant, din sticla dubla, realizat prin imbinarea cant in cant a panourilor de sticla, fara montanti intermediari verticali. Panourile din geam securizat sau laminat sunt montate si fixate sus si jos in profile din aluminiu. Intre panourile de sticla, pe verticala, izolarea este asigurata de profile din policarbonat transparent, banda siliconica, sau profile inguste din aluminiu, care au aceeasi grosime cu cea a sticlei.

VITRUM asigura o izolare fonica foarte buna de pana la 47 dB si in acelasi timp, o inalta transparenta si luminozitate.

Geamurile utilizate pot fi float standard sau ultraclear cu o grosimea de 8, 10 sau 12 mm si sunt securizate sau laminat. Profilele de fixare a panourilor de sticla pe tavan si pe pardoseala sunt extrudate din aliaje de aluminiu si sunt finisate prin anodizare sau vopsire cu pulberi in camp electrostatic. Pentru geamul de 10 si 12 mm profilele de fixare montate pe verticala sunt utilizate numai la inceputul si sfarsitul peretelui de compartimentare. Cresterea stabilitatii structurii si izolarea se realizeaza prin montarea intre panourile din sticla a unei benzi siliconice, un profil din policarbonat transparent sau un profil ingust din aluminiu, toate avand aceeasi grosime cu cea a sticlei. Tehnologia utilizata pentru imbinarea pe verticala a panourilor creste semnificativ stabilitatea structurii si rezistenta la socuri aplicate in plan orizontal.

Prin posibilitatea de combinare cu toate celelalte sisteme de compartimentare TECHO se pot realiza proiecte complexe, in care, in cadrul unui perete, se regasesc atat pereti SKY cu un geam simplu cat si pereti Vitrum cu geam dublu sau un perete opac Divido. Combinarea lor se face firesc, cu elemente de trecere de la un sistem la altul proiectate special pentru acest scop.

Peretele dublu de sticla permite montarea jaluzelelor cu latimea de 25 mm, intre cele doua panouri de sticla.

Elementele componente ale sistemului Vitrum sunt prelucrate si taiate la dimensiune conform cerintelor fiecarui proiect.

Sistemul vitrum permite relocarea peretilor si reutilizarea elementelor fara reparatii substantiale. Peretii de compartimentare pot fi relocati pe un nou amplasament numai daca noile cote se incadreaza in limita de toleranta a sistemului de +/- 11 mm.

Tip constructie	Dublu placat cu sticla - fara profile intermediare din aluminiu intre foile de sticla
Profil de montaj - dimensiuni:	Inaltime: - 33 - 48mm Latime: 100 mm
Inaltimea maxima a peretelui de sticla:	3450 mm
Latimea modulelor de sticla:	300 to 1300 mm
Latimea minima a panoului de sticla	150mm
Greutate medie:	54-64 kg/mp
Tipuri de imbinari intre panourile de sticla	banda siliconica dublu adeziv. Culoare negru (optional transparenta); Profil din policarbonat transparent; Profil "I" aluminiu anodizat
Tipuri de sticla utilizata	Sticla securizata 8mm; 10mm; 12mm Sticla securizata si laminata 10,38mm; 12,38mm Sticla securizata si laminata acustica 8,76mm; 10,76mm; 12,76mm
Tipuri de tocuri	Toc din aluminiu; Toc din lemn
Grosimea usilor din sticla	8mm, 10mm, 12mm
Grosimea usilor din lemn	WD40-41mm; WD55-55mm; WD100-100mm
Grosimea usilor cu sticla dubla	AD40-41mm; DG55 and DGP-55mm; DG100-100mm
Toleranta sistemului	+/-11mm
Izolatie acustica	geam securizat 10+securizat 10mm - 44 dB; geam securizat 10+laminat 4.1.4mm - 45 dB geam laminat 5.1.5+laminat 4.1.4mm - 46 dB geam laminat 6.1.6+laminat 4.1.4mm - 47 dB



Double glazed V10 system

## VITRUM V10

VITRUM V10 is a non-loadbearing partition system, double glazed, made by edge - to - edge connection of the glass panels, without intermediate vertical pillars. The panels of tempered or laminated glass are mounted and fixed at the top and bottom in aluminum profiles. Between the glass panels, vertically, the isolation is ensured by transparent polycarbonate profiles, silicone tape, or narrow aluminum profiles, which have the same thickness as that of the glass. VITRUM provides very good sound insulation of up to 47 dB, and at the same time, a high transparency and brightness.

The glass panels are standard float glass or ultra-clear glass with the thickness of 8, 10 or 12 mm and they are tempered or laminated. The fixing profiles of the glass panels on the ceiling and on the floor are extruded of aluminum alloy and are in anodized finish or painting with powders in electrostatic field. For the glass of 10 and 12 mm, the fixing profiles mounted vertically are used only at the beginning and end of the partition wall.

The increase in the stability of the structure and isolation shall be achieved by mounting a silicone band, a polycarbonate transparent profile or a narrow aluminum profile, between the glass panels, all having the same thickness as that of the glass. The technology used for the vertical connection of the glass panels significantly increases the stability of the structure and resistance to shocks that are applied in the horizontal plane.

With the possibility of combining with all other TECHO partitioning systems, complex projects can be achieved, in which, within a wall, can be found both SKY partitions with simple glass, Vitrum partitions with double glass or Divido opaque partitions. And their combination is made naturally, with elements passing from one system to another, specially designed for this purpose.

The double glass wall allows the mounting of blinds of 25 mm width between the two glass panels.

The components of the Vitrum system are processed and cut to size based to the requirements of each project.

Vitrum system allows walls relocation and reuse of elements without substantial repairs. Partition walls can be relocated to a new location only if the new quotas fall within the tolerance limits of the system of +/- 11 mm.

Construction type	Double glazed glass partition - without intermediate vertical mullions between the glass panels
Mounting profile - sizes:	Height: - 33 - 48mm Width: 100 mm
Maximum height of the glass wall	3450 mm
Width of the glass modules:	300 to 1300 mm
Minimum width of the glass panel	150mm
Average weight:	54-64 kg/mp
Types of connections between glass panels	Double adhesive silicone tape Black (optional transparent); Transparent polycarbonate profile; Anodized aluminum profile "I" type.
Types of glass panels	Tempered glass 8mm; 10mm; 12mm Tempered and laminated glass 10,38mm; 12,38mm Tempered and acoustic laminated glass 8,76mm; 10,76mm; 12,76mm
Types of frames	Aluminum frame; Wooden frame
Thickness of the glass doors	8mm, 10mm, 12mm
Thickness of the wooden doors	WD40-41mm; WD55-55mm; WD100-100mm
Thickness of doors with double glass	AD40-41mm; DG55 and DGP-55mm; DG100-100mm
Tolerances	+/-11 mm
Soundproofing	tempered glass 10+10mm - 44 dB; tempered glass 10+laminated 4.1.4mm - 45 dB laminated glass 5.1.5+laminated 4.1.4mm - 46 dB laminated glass 6.1.6+laminated 4.1.4mm - 47 dB



DG doors and T connections



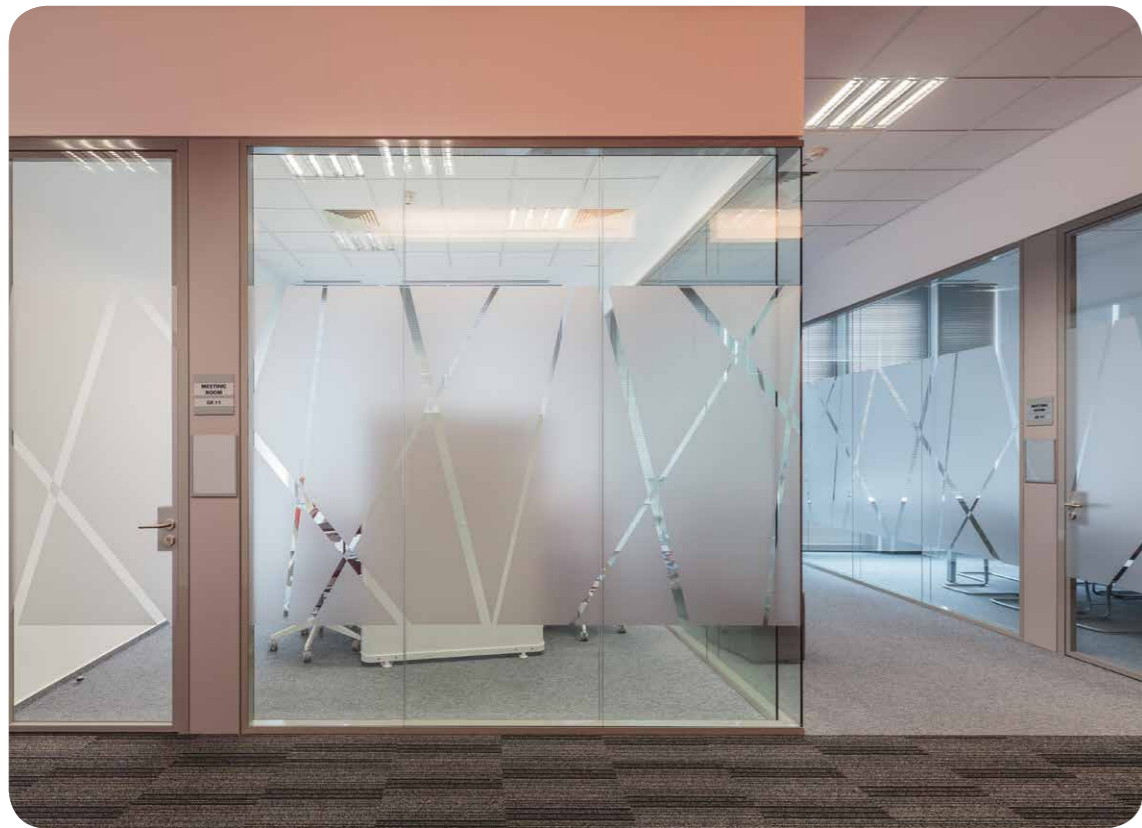
Double glazed V10 system



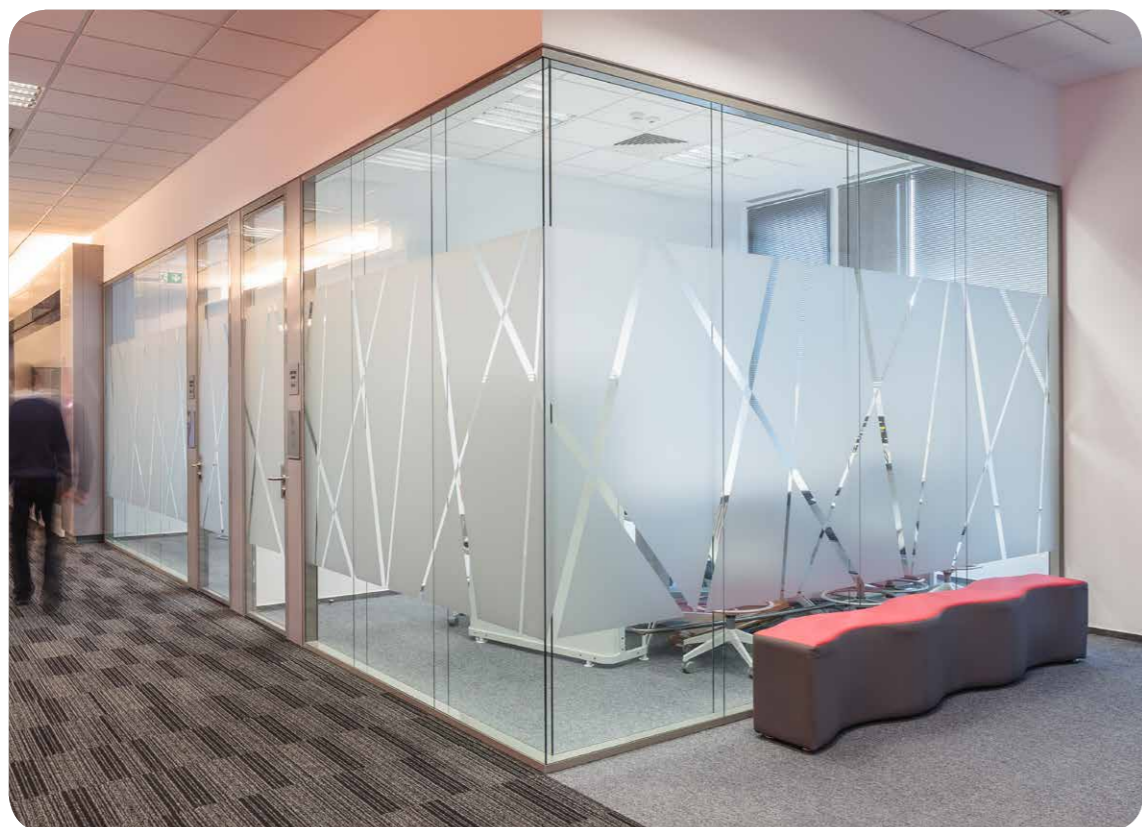
Double glazed Vitrum V10 system



Double glazed Vitrum V10 system with double glazed doors



Double glazed Vitrum V10 system with technical module and DG door



Double glazed Vitrum V10 system with double glazed doors





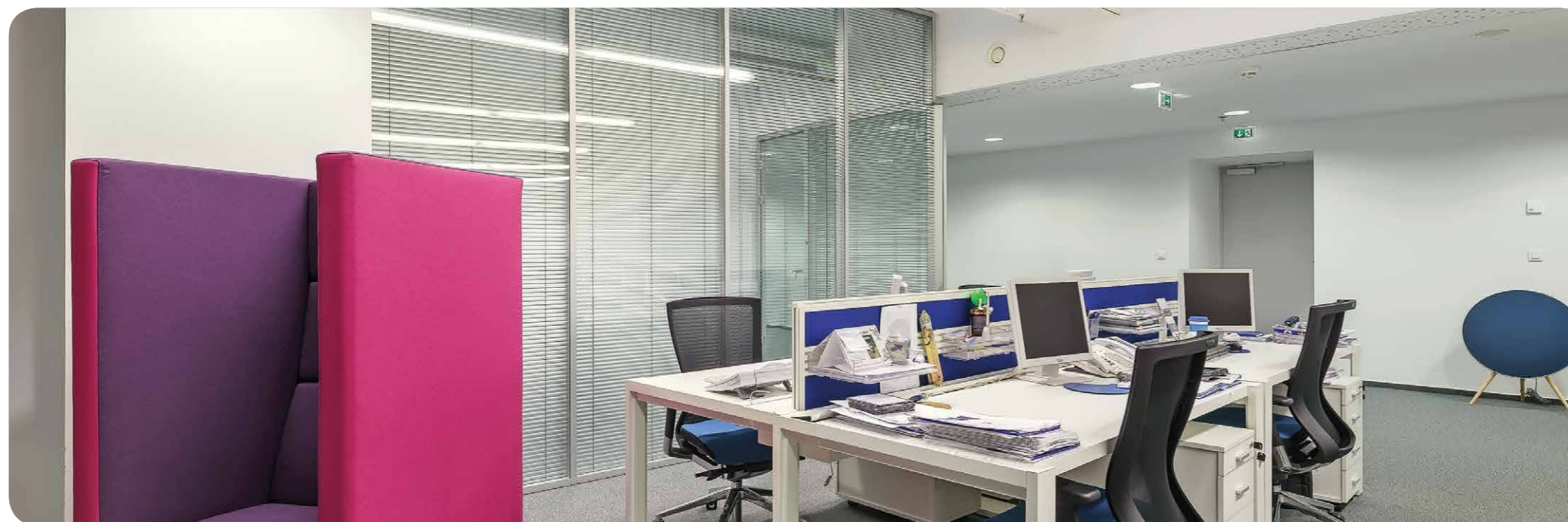
Double glazed Vitrum V10 system with DG double glazed door



Double glazed Vitrum V10 system with single glazed doors



Double glazed V6 system with interior blinds



## VITRUM V6

Vitrum V6 este un sistem de compartimentare neportant realizat din panouri cu 2 foi de sticla montate sus si jos in profile de aluminiu si conectate intre ele pe verticala prin intermediul unui montant cu latimea de 33 mm. Geamul float standard sau ultraclear are grosimea de 5/ 6 /8 /10 mm si este securizat sau laminat. Profilele de fixare a panourilor de sticla pe tavan si pe pardoseala sunt extrudate din aliaje de aluminiu si sunt finisate prin anodizare sau vopsire cu pulberi in camp electrostatic. Versatilitatea si flexibilitatea sistemului permite combinarea pe verticala sau orizontala a panourilor de sticla si a panourilor pline din lemn, gips, materiale composite, panouri fonoabsorbante textile si panouri fonoabsorbante din lemn. Montantii intermediari ai sistemului Vitrum V6 permit realizarea unor configuratii complexe si confera compartimentarii o mare stabilitate. Prin posibilitatea de combinare cu toate celelalte sisteme de compartimentare TECHO se pot realiza proiecte complexe, in care, in cadrul unui perete, se regasesc pereti SKY cu un geam simplu, pereti Vitrum cu geam dublu sau un perete opac - Divido iar combinarea lor se face firesc, cu elemente de trecere de la un sistem la altul proiectate special pentru acest scop. Peretele dublu de sticla permite montarea jaluzelelor cu latimea de 25 mm, intre cele doua panouri de sticla. Elementele componente ale sistemului Vitrum sunt prelucrate si taiate la dimensiune conform cerintelor fiecarui proiect. Sistemul vitrum permite relocarea peretilor si reutilizarea elementelor fara reparatii substantiale. Peretii de compartimentare pot fi relocati pe un nou amplasament numai daca noile cote se incadreaza in limita de toleranta a sistemului de +/- 11 mm.

Tip constructie	Dublu placat cu sticla - cu profile intermediare din aluminiu intre foile de sticla
Profil de montaj -dimensiuni:	Inaltime: - 33 - 48mm Latime: 100 mm
Inaltimea maxima a peretelui de sticla:	3600 mm
Latimea modulelor de sticla:	300 to 1300 mm
Latimea minima a panoului de sticla	150mm
Greutatea medie:	26-32 kg/mp
Tipuri de imbinari intre panourile de sticla	Montant de aluminiu 33mm latime
Tipuri de sticla utilizata	Geam securizat 5mm; 6mm; 8mm; 10mm Geam securizat si laminat 6,38mm; 10,38mm; 12,38mm Geam securizat si laminat acustic 8,76mm; 10,76mm; 12,76mm
Tipuri de tocuri	Toc din aluminiu; Toc din lemn
Grosimea usilor din sticla	8mm, 10mm, 12mm
Grosimea usilor din lemn	WD40-41mm; WD55-55mm; WD100-100mm
Grosimea usilor cu sticla dubla	AD40-41mm; DG55 and DGP-55mm; DG100-100mm
Toleranta sistemului	+/-11mm
Izolatie acustica	geam securizat 6+securizat 6mm - 41 dB; geam laminat 4.1.4+securizat 6mm - 46 dB

## VITRUM V6

Vitrum V6 is a non-loadbearing partitioning system, made of panels with 2 sheets of glass mounted on the top and bottom in aluminum profiles and connected together vertically by means of a pillar of 33 mm width. Standard float glass or ultra-clear glass is 5/6/8/10 mm thick and is secured or laminated. The fixing profiles of the glass panels on the ceiling and on the floor are extruded of aluminum alloy and are finished by anodizing or painting with powders in electrostatic field. The versatility and flexibility of the system allows for vertical or horizontal combination of the glass panels and core wooden, gypsum, composite materials panels, textile soundproof panels and wooden soundproof panels. The intermediate pillars of Vitrum V6 system allow the achievement of complex configurations and confer greater stability to the partitioning. With the possibility of combining with all other TECHO partitioning systems, complex projects can be achieved, in which, within a wall, can be found both SKY partitions with simple glass, Vitrum partitions with double glass or Divido opaque partitions. And their combination is made naturally, with elements passing from one system to another, specially designed for this purpose. The double glass wall allows the mounting of blinds of 25 mm width between the two glass panels. The components of the Vitrum V6 system are processed and cut to size based to the requirements of each project. Vitrum system allows walls relocation and reuse of elements without substantial repairs. Partition walls can be relocated to a new location only if the new quotas fall within the tolerance limits of the system of +/- 11 mm.

Construction type	Double glazed glass partition - with intermediate vertical mullions between the glass panels
Mounting profile - sizes:	Height: -33 - 48mm Width: 100 mm
Maximum height of the glass wall	3600 mm
Width of the glass modules:	300 to 1300 mm
Minimum width of the glass panel	150mm
Average weight:	26-32 kg/mp
Types of connections between glass panels	Aluminum pillar of 33 mm width.
Types of glass panels	Tempered glass 5mm; 6mm; 8mm; 10mm Tempered and laminated glass 6,38mm; 10,38mm; 12,38mm Tempered and laminated acoustic glass 8,76mm; 10,76mm; 12,76mm
Types of frames	Aluminum frame; Wooden frame
Thickness of the glass doors	8mm, 10mm, 12mm
Thickness of the wooden doors	WD40-41mm; WD55-55mm; WD100-100mm
Thickness of doors with double glass	AD40-41mm; DG55 and DGP-55mm; DG100-100mm
Tolerances	+/-11mm
Soundproofing	tempered glass 6+6mm - 41 dB; laminated glass 4.1.4+tempered 6mm - 46 dB



Double glazed Vitrum V6 system





Double glazed Vitrum V6 system



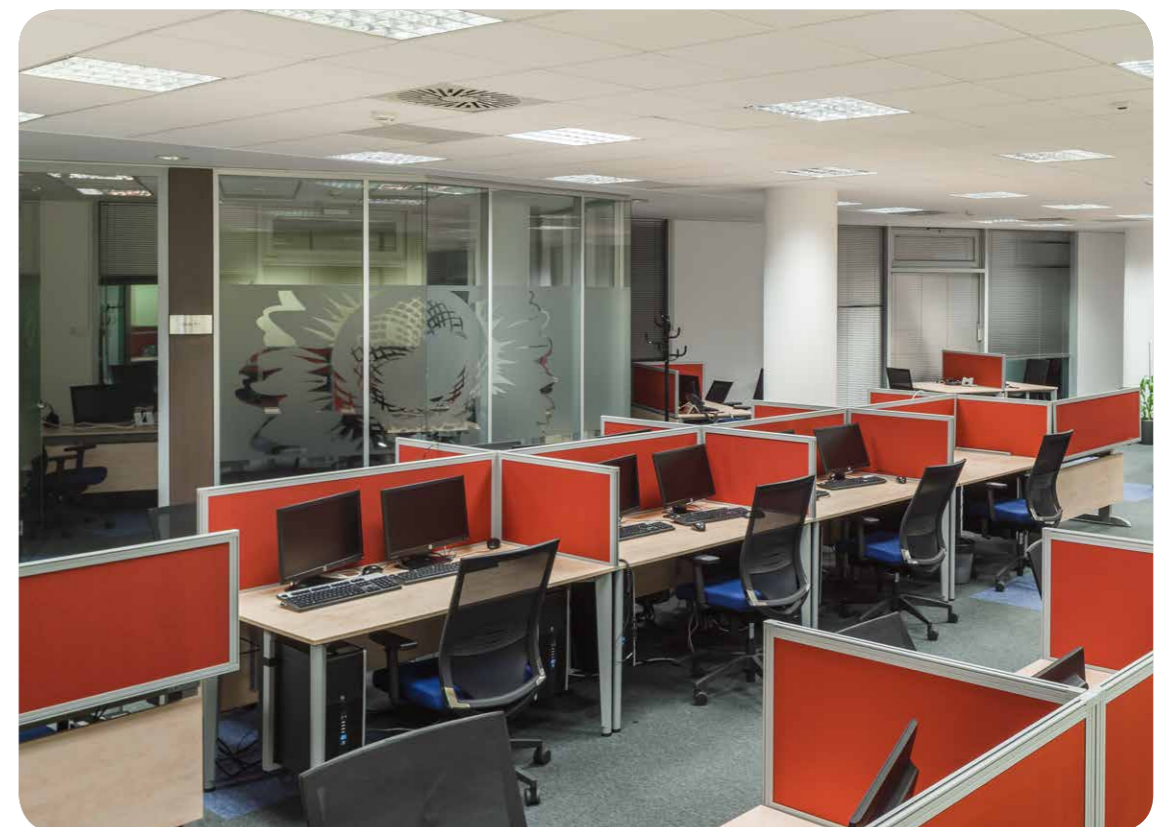
Double glazed Vitrum V6 system with single glazed doors



Double glazed V6 system detail



Double glazed Vitrum V6 system



Double glazed Vitrum V6 system with technical modules



Double glazed Vitrum V6 system



Double glazed Vitrum V6 system with single glazed doors

DIVIDO

DIVIDO este un sistem de compartimentare neportant realizat din module bi block. Principala caracteristica a sistemului Divido este modularitatea. Aceasta modularitate este data de simplitatea constructiei care consta dintr-o structura de profile de otel galvanizat de care sunt agatate, folosind carlige din otel, panouri din diverse materiale si dimensiuni.

lubind lemnul am vrut ca in Sistemul Divido panourile de lemn sa fie vazute in toata frumusetea si simplitatea lor, fara a avea marginile acoperite cu profile de fixare din aluminiu sau otel. Intre panouri se formeaza un nut de 6 mm care poate fi vazut atat pe verticala cat si pe orizontala.

Pentru ca nutul de 6 mm da partitiei cu placi din lemn un aspect special am decis ca acest nut sa fie folosit ca element definitoriu al intregului sistem DIVIDO si am proiectat tot sistemul astfel incat cei 6 mm sa existe intre panouri indiferent de materialul din care sunt facute, intre panouri si elementele de legatura sau intre panouri si tocul usii.

DIVIDO da posibilitatea constructiei de pereti de compartimentare din module bi block cu sticla dubla sau simpla, module din placi de lemn, metal, materiale composite, panouri fonoabsorbante din lemn sau textile.

DIVIDO este un perete de compartimentare relocabil si poate fi demontat si relocat cu pierderi minime daca dimensiunile noii locatii se afla in limita de toleranta a sistemului.

Sistemul a fost proiectat astfel incat sa permita traversarea lui cu cabluri electrice si alte instalatii.

DIVIDO is a non-loadbearing partitioning system made of bi block modules.

The main feature of the Divido system is modularity. This modularity is given by the simplicity of the construction that consists of a structure of galvanized steel profiles to which panels of various materials and sizes are fixed using steel hooks,

We love wood, so we wanted that in the Divido system, the wood panels to be seen in all their beauty and simplicity, without having the edges coated with aluminum or steel fastening profiles. Between panels a 6 mm gap is formed that can be seen both vertically and horizontally. As the gap of 6 mm gives the partition of wooden panels a particular look, we decided that this shall be used as defining element of the DIVIDO system. And we designed the entire system so that the 6 mm should exist between the panels regardless of the material of which they are made, but also between the panels and the connection elements or between the panels and the door frame. DIVIDO enables the construction of partitioning walls of bi block modules with double or simple glass; with panels made of wood, metal or composite materials; and sound-absorbing panels made of wood or textiles. DIVIDO is a partitioning wall that can be demounted and relocated with minimal loss if the sizes of the new location are within the tolerance limit of the system.

The system was designed so as to allow the passage of electrical cables and other installations.

Divido Panel and Twinnglass modules



De asemenea am considerat ca este obligatoriu ca pentru demontarea unui panou sa nu fie nevoie de nici o scula. Demontarea unui panou se face printr-o simpla miscare de ridicare a panoului cu numai 5 mm iar remontarea lui este la fel de simpla si nu necesita scule, unelte sau dispozitive speciale.

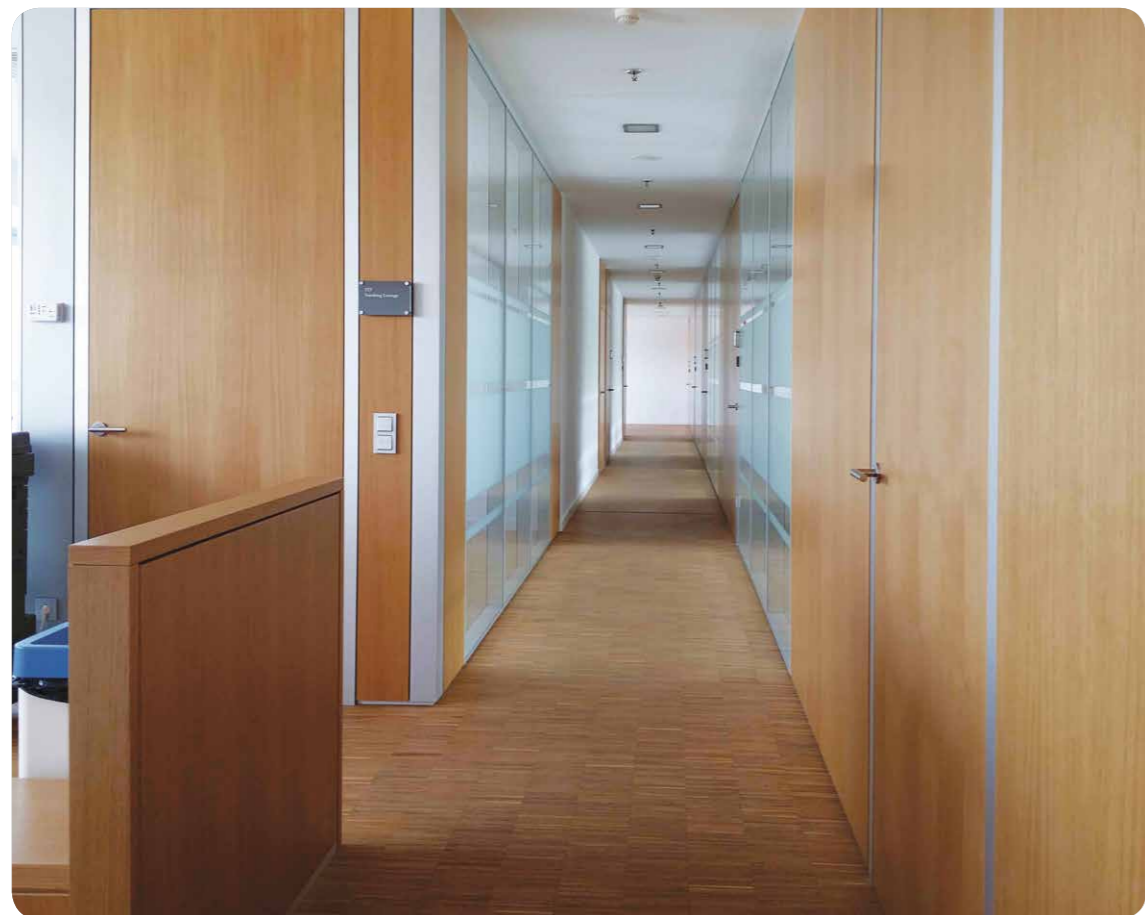
Sistemul DIVIDO se poate combina cu usi, elementele de legatura si parti componente ale tuturor peretilor de compartimentare TECHO. Integrarea usilor in peretele de compartimentare DIVIDO se face utilizand tocuri de usa din profile de aluminiu extrudate. Imbinarea la colturi a tocului se face cu coltare, care asigura o aliniere perfecta si o strangere ferma a profilelor. Pe tocul partitiei DIVIDO pot fi montate usi din lemn, usi din sticla simpla sau usi din sticla dubla. Foaia de usa este pozitionata la fata tocului pe partea opusa balamalelor (FLUSH DOOR). Garnitura coextrudata montata pe toc este proiectata pentru a asigura o buna izolare fonica. Tocol asigura posibilitatea utilizarii accesoriilor de tip amortizor, prag automat, placuta electromagnetica, broasca electromagnetica, cititor de card etc. Langa tocul usii sau integrat in tocul usii este posibila instalarea panourilor tehnice din lemn, metal sau din sticla opaca, in care se pot instala prize, intreruptoare, cititoare de card, echipamente pentru controlul climatizarii. Prin posibilitatea de combinare cu toate celelalte sisteme de compartimentare TECHO se pot realiza proiecte complexe, in care, in cadrul unui perete, se regasesc atat pereti SKY cu un geam simplu, pereti Vitrum cu geam dublu si pereti opaci Divido. Iar combinarea lor se face firesc, cu elemente de trecere de la un sistem la altul proiectate special pentru acest scop. Elementele componente ale sistemului DIVIDO sunt prelucrate si taiate la dimensiune conform cerintelor fiecarui proiect.

We also considered that for demounting a panel no tool shall be needed. The demounting of a panel shall be made by a simple lifting movement of the panel by only 5 mm and its re-mounting is as easy and does not require tools, instruments or special devices.

The DIVIDO system may be combined with doors, connection elements and components of all TECHO partitioning walls.

The integration of the doors in the DIVIDO partitioning wall is done using door frames made of extruded aluminum profiles. The corner connection for the frame is made with corner joints, which ensure a perfect alignment and a firm assemblage of the profiles. On the DIVIDO partition frame can be installed wooden doors, simple glazed glass doors and double glazed glass doors. The door leaf is placed at the front of the frame on the side opposite to the hinges (FLUSH DOOR). The co-extruded gasket mounted on the frame is designed to provide good sound insulation.

The frame ensures the possibility to integrate a floor-concealed door closer, automatic door seal, electromagnetic plate, electromagnetic lock, card reader etc. Near the door frame or integrated in the door frame it's possible to install technical panels made of wood, metal or opaque glass, in which one can install plugs, switches, card readers, and climate control equipment. With the possibility of combining with all other TECHO partitioning systems, complex projects can be achieved, in which, within a wall, can be found both SKY partitions with simple glass, Vitrum partitions with double glass or Divido opaque partitions. And their combination is made naturally, with elements passing from one system to another, specially designed for this purpose. The components of the DIVIDO system are processed and cut to size based to the requirements of each project.



Divido Panel and Twinglass modules



Divido blind panels with V10 double glazed partition

Tip constructie	Dublu placat
Profil de montaj - dimensiuni	Inaltime: Panel - 15 - 22mm; Twinglass - 53 - 60mm Glass - 53 - 60 mm; Uniglass - 24mm; Grosimea: 100mm
Latimea tocului de usa	100mm pentru toc 33760
Inaltimea maxima a peretelui	3000mm
Latimea modulelor	300 - 1300mm
Greutatea medie	25-35kg/mp
Structura principala	Profil sup/inf din Aluminiu finisaj Anodizat si Montanti de otel inoxidabil de care sunt agatate panourile cu carlige din Aluminiu
Tipuri de panouri	Rame din Aluminiu cu sticla securizata sau laminata de 4/5/6/8mm Panouri pline din PAL/MDF/Metal/Materiale compozite/Panouri fonoabsorbante din lemn sau cu textil
Grosime panouri	difera in functie de materialul utilizat
Tipuri de tocuri	Toc din aluminiu; Toc din lemn
Grosimea usi de sticla	8mm; 10mm;
Grosimea usilor din lemn	41mm; 55mm
Grosimea usilor cu sticla dubla	41mm; 55mm; 100mm
Toleranta - pe inaltime	+/- 8 mm
Toleranta - pe latime	+/- 3 mm
Izolatie acustica	37 - 48 dB

Construction type	Double glazed
Mounting profile - sizes	Height: Panel - 15 - 22mm; Twinglass - 53 - 60mm Glass - 53 - 60mm; Uniglass - 24mm; Thickness: 100mm
Door frame width	100mm for the 33760 frame
Maximum height of the glass wall	3000mm
Width of the glass modules	300 - 1300mm
Average weight	25-35kg/mp
Types of joints between glass panels	Sup/Inf. Profiles made of Anodized Aluminum and Stainless steel mullions on which the panels/frames are fixed with Aluminum hooks
Types or panels	Aluminum Frames with tempered or laminated glass 4/5/6/8mm thick Blind panels made of Wood/Metal/Composite materials/Sound-absorbing panels made of wood or textiles
Panel thickness	depending on the material used
Types of frames	Aluminum frame; Wooden frame
Thickness of the glass doors	8mm; 10mm;
Thickness of the wooden doors	41mm; 55mm
Thickness of doors with double glass	41mm; 55mm; 100mm
Tolerance - on height	+/- 8 mm
Tolerance - on lateral	+/- 3 mm
Soundproofing	37 - 48 dB



Treasurer

Divido Panel with wooden doors and V10 partitions



Divido blind panels with V10 double glazed glass partitions and aluminium corner

## DIVIDO PANEL

DIVIDOpanel este un sistem de compartimentare neportant, bi bloc, compus din module cu panouri de lemn montate pe structura de baza realizata din montanti de otel inoxidabil. Panourile din lemn sunt fixate de structura cu ajutorul carligelor montate pe spatele panoului.

Panourile pot fi realizate din placi de PAL sau MDF cu clasa de emisivitate E1 si sunt acoperite cu folii melaminice sau din HPL, cu furnir de lemn din diferite esente, metal, tesaturi, tapet sau sunt vopsite in culori RAL.

Structura de baza este realizata din profile din tabla de otel galvanizata, prelucrata prin deformare plastica la rece. Montantii structurii de baza sunt prevazuti cu un sistem telescopic de reglare pe inaltime.

Fixare panourilor este ascunsa, fara profile vizibile pe fata panourilor, cu un nut de 6 mm intre panouri respectiv intre panouri si celelalte elemente ale sistemului.

Izolarea fonica de pana la 48 dB se obtine prin utilizarea unui sistem de garnituri montate pe structura de baza si prin utilizarea de vata minerala bio solubila, clasa de combustibilitate A1, ca material de umplutura intre panouri.

Structura de baza permite instalarea de cabluri si instalatii electrice in interiorul peretelui. Timp de montaj este redus datorita panourilor prefabricate si structurii de baza proiectata special. Demontarea panourilor se face fara a avea nevoie de scule, unelte sau dispozitive speciale, prin simpla ridicare a panoului cu 5 mm. DIVIDOpanel este un perete de compartimentare relocabil si poate fi demontat si relocat cu pierderi minime daca dimensiunile noii locatii se afla in limita de toleranta a sistemului.

Profilul de fixare de tavan si pardoseala permit preluarea toleranțelor dimensionale si de executie precum si a miscării clădirii.

Sistemul DIVIDOpanel se poate combina cu usi, elementele de legatura si parti componente ale tuturor peretilor de compartimentare TECHO.

Tip constructie	Dublu placat
Profil de montaj vizibil-dimensiuni	Inaltime: 15 - 22mm; Grosimea: 100mm
Latimea tocului de usa	100mm pentru toc 33760
Inaltimea maxima a peretelui	3000mm
Latimea modulelor	300 - 1300mm
Greutatea medie	25-35kg/mp
Structura principala	Profil sup/inf din Aluminiu finisaj Anodizat si Montanti de otel inoxidabil de care sunt agatate panourile cu carlige din Aluminiu
Tipuri de panouri	Panouri pline din PAL/MDF/Metal/Materiale compozite/Panouri fonoabsorbante din lemn sau cu textil
Finisaje panou:	PAL melaminat EGGER ZOOM RADAUTI-Clasa emisivitate E1, combustibilitate B2 sau la cerere B1; PAL furniruit - furnir de lemn; PAL laminat cu HPL 0.8mm; MDF vopsit culori RAL - vopsea pe baza de apa; Tabla otel/aluminiu vopsita in camp electrostatic; Material composite: aluminiu compozit, Corian etc; Panouri fonoabsorbante din lemn; Panouri fonoabsorbante textile; PA
Grosime panouri	18-22mm
Tipuri de tocuri	Toc din aluminiu; Toc din lemn
Grosimea usii de sticla	8mm; 10mm;
Grosimea usilor din lemn	41mm; 55mm
Grosimea usilor cu sticla dubla	41mm; 55mm; 100mm
Toleranta - pe inaltime	+/- 8 mm
Toleranta - pe latime	+/- 3 mm
Izolatie acustica	PAL 18mm - PAL 18 mm - 40 dB PAL 18mm - 64VM - PAL 18 mm - 48 dB

## DIVIDO PANEL

DIVIDOpanel is a non-loadbearing partitioning system, bi block, made of modules with wood panels mounted on the basic structure made from stainless steel. The wooden panels are fixed to the structure by means of hooks mounted on back of the panel.

The panels are made of PAL or MDF panels with E1 emissivity class and are covered in melamine foil or HPL, with various essences of wood veneer, with metal, fabrics, wallpaper or painted in RAL colors.

The basic structure is made of galvanized steel sheet profiles, processed by cold plastic deformation. The pillars of the basic structure are provided with an telescopic adjustment on height.

The panels fixing is hidden, without visible profiles on the front panels. Between the panels is a gap of 6 mm, respectively between the panels and the other elements of the system.

The sound insulation up to 48 dB is obtained by using a system of gaskets mounted on the basic structure and by using bio soluble mineral wool, combustibility class A1, as stuffing material between the panels.

The basic structure allows the installation of cables and electrical installations inside the wall.

The assembly time is reduced due to the prefabricated panels and basic structure specially designed.

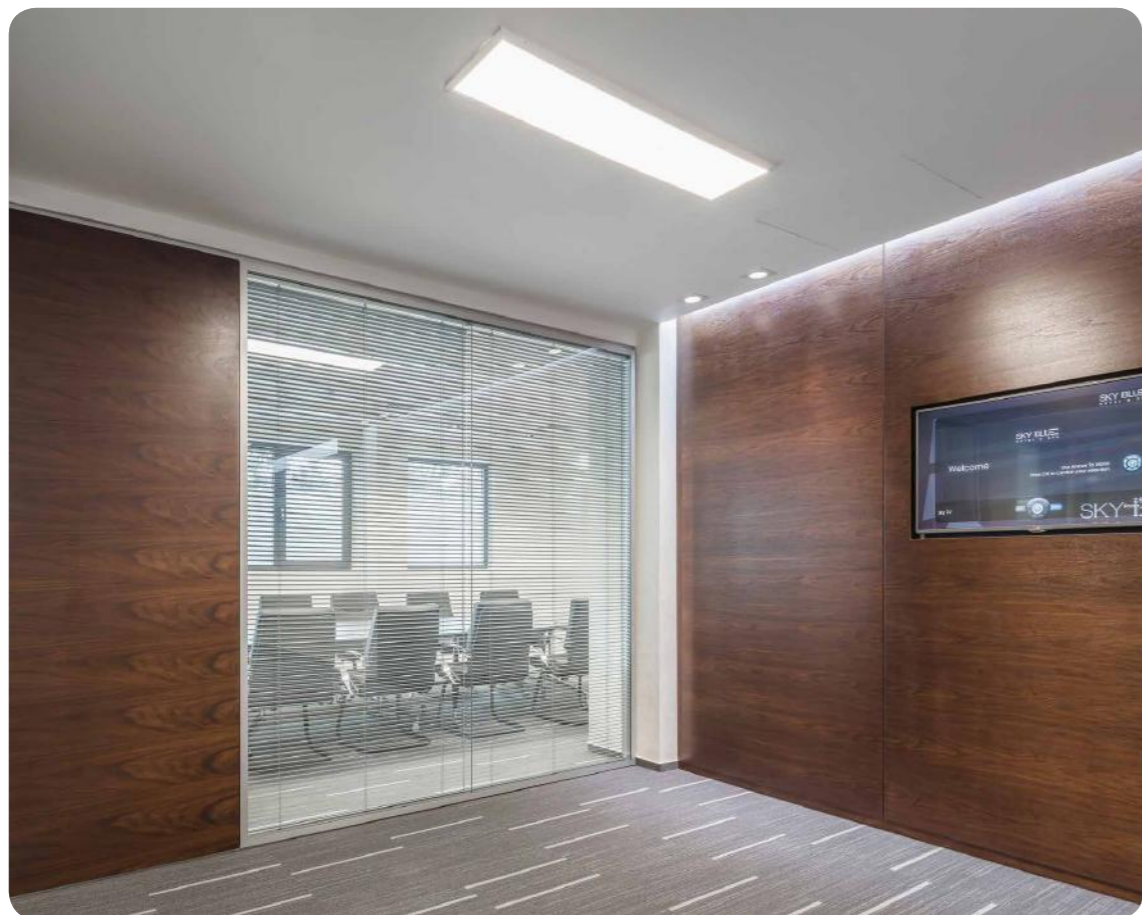
The disassembly of the panels is done without the need of special tools or devices, by simply lifting the panel by 5 mm.

DIVIDOpanel is a partitioning wall that can be relocated and that can be demounted and relocated with minimal loss if the sizes of the new location are within the tolerance limit of the system.

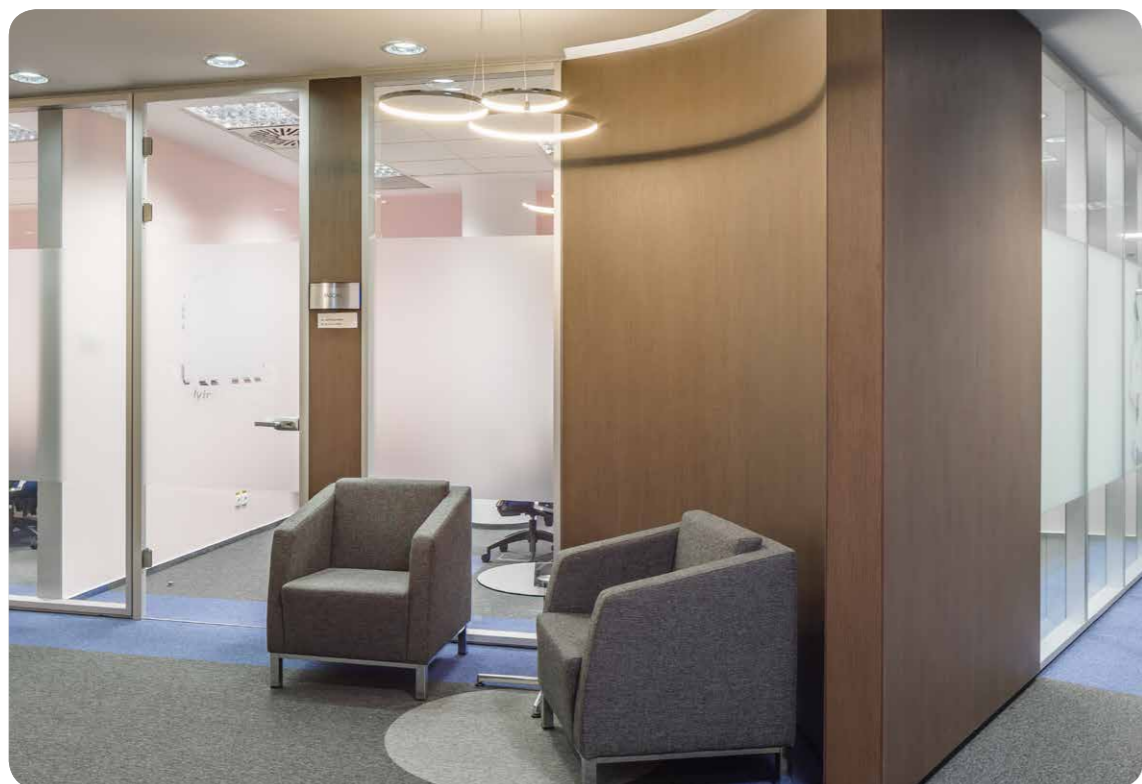
The profile for the ceiling and floor fixing allows the taking over of the dimensional and execution tolerances as well as of the building movement. The DIVIDOpanel system may be combined with doors, connection elements and components of all TECHO partitioning walls.

Construction type	Double glazed
Mounting visible profile - sizes	Height: Panel - 15 - 22mm; Thickness: 100mm
Door frame width	100mm for the 33760 frame
Maximum height of the glass wall	3000mm
Width of the glass modules	300 - 1300mm
Average weight	25-35kg/mp
Types of joints between glass panels	Sup/Inf. Profiles made of Anodized Aluminum and Stainless steel mullions on which the panels are fixed with Aluminum hooks
Types or panels	Blind panels made of Wood/Metal/Composite materials/Sound-absorbing panels made of wood or textiles
Panel finishes	EGGER ZOOM RADAUTI melamine PAL - E1 emissivity class, combustibility B2 or upon request B1; PAL with wood veneer; Laminated PAL with HPL of 0.8 mm; MDF lacquered in RAL colors; Steel / aluminum sheet painted in electrostatic field; Composite material: aluminum composite, Corian, etc; Soundproofing panels with Wooden or Textile finish; PA
Panel thickness	18 - 22mm
Types of frames	Aluminum frame; Wooden frame
Glass doors thickness	8mm; 10mm;
Wooden doors thickness	41mm; 55mm
Double glazed glass doors thickness	41mm; 55mm; 100mm
Tolerance - on height	+/- 8 mm
Tolerance - on lateral	+/- 3 mm
Soundproofing	PAL 18 - PAL18 mm - 40 dB PAL 18mm - 64MW - 18 mm - 48 dB

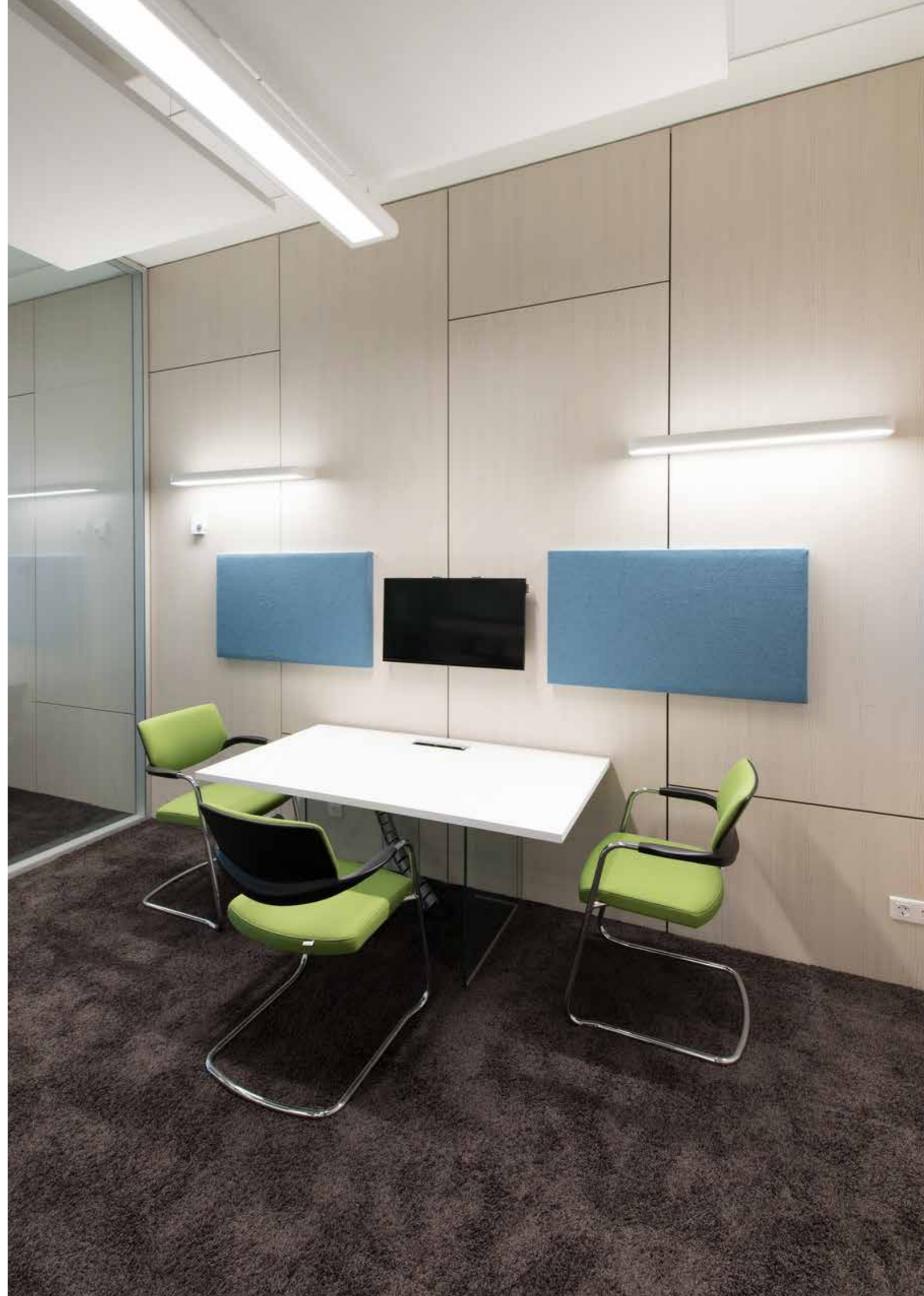


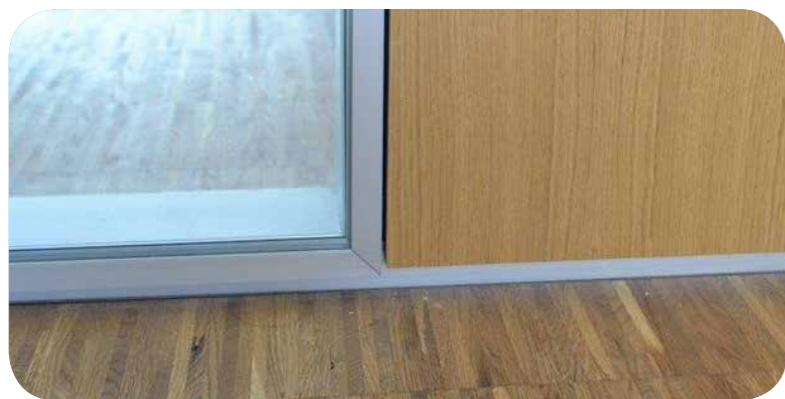
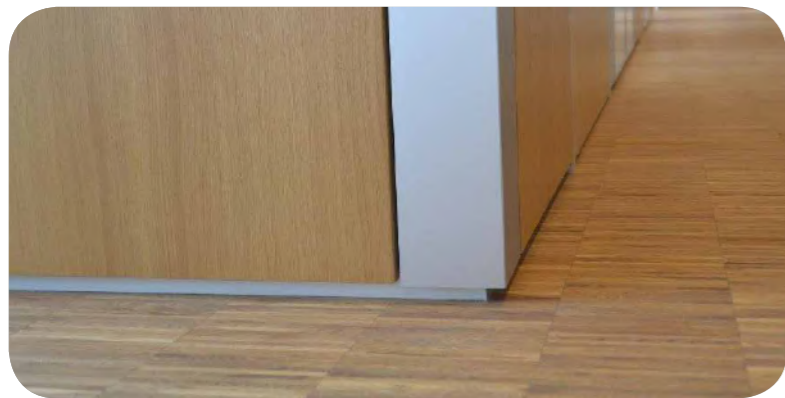


Divido blind panels with V10 double glazed partition



Divido Panel system





Divido Panel system



Divido Panel system with wooden doors

## DIVIDO TWINGLASS

DIVIDOTwinglass este un sistem de compartimentare, neportant, din sticla dubla in care modulele bi block realizate din panouri de sticla montate in rame de aluminiu sunt fixate pe structura de baza din otel. Panourile cu sticla sunt fixate de structura de baza cu ajutorul carligelor montate pe spatelul ramei de aluminiu.

Geamul float sau ultraclar, securizat sau laminat are grosime de 4, 5, 6 sau 8 mm si este montat prin intermediul garniturii coextrudate in rama de aluminiu. Geamul poate fi sablat mecanic, decorat prin aplicarea de folie decorativa sau prin printare.

Profilele de aluminiu care formeaza rama panoului sunt finisate prin anodizare sau vopsire in camp electrostatic in culori RAL.

Structura de baza este realizata din profile din tabla de otel galvanizata, prelucrata prin deformare plastica la rece. Montantii structurii de baza sunt prevazuti cu un sistem telescopic de reglare pe inaltime.

Fixare panourilor este ascunsa, fara profile vizibile pe fata panourilor cu un nut de 6 mm intre panouri sau intre panouri si celelalte elemente ale sistemului. Izolare fonica de pana la 38 dB se obtine prin utilizarea unui sistem de garnituri montate pe structura de baza si prin utilizarea sticlei cu diferite grosimi.

Structura de baza permite instalarea de cabluri si instalatii electrice in interiorul peretelui. Timpul de montaj este redus datorita panourilor prefabricate si structurii de baza proiectata special. Demontarea panourilor se face fara a avea nevoie de scule, unelte sau dispozitive speciale, prin simpla ridicare a panoului cu 5 mm.

DIVIDOTwinglass este un perete de compartimentare relocabil si poate fi demontat si relocat cu pierderi minime daca dimensiunile noii locatii se afla in limita de toleranta a sistemului.

Profilul de fixare de tavan si pardoseala permite preluarea toleranțelor dimensionale si de executie precum si a miscării clădirii. Sistemul DIVIDOTwinglass se poate combina cu usi, elementele de legatura si parti componente ale tuturor peretilor de compartimentare TECHO. Intre cele doua foi de sticla ale sistemului se pot monta jaluzele cu latimea de 25 mm.

Tip constructie	Dublu placat
Profil de montaj vizibil-dimensiuni	Inaltime: 53 - 60mm; Grosimea: 100mm
Latimea tocului de usa	100mm pentru toc 33760
Inaltimea maxima a peretelui	3000mm
Latimea modulelor	300 - 1300mm
Greutatea medie	26-35kg/mp
Structura principala	Profil sup/inf din Aluminiu finisaj Anodizat si Montanti de otel inoxidabil de care sunt agatate panourile cu carlige din Aluminiu
Tipuri de panouri	Sticla securizata de 4/5/6/8 mm Sticla securizata si laminata de 6,38mm; 8,38mm Sticla securizata si laminata acustica de 8,76 mm
Finisaj profile aluminiu	Standard: anodizat-gri EV1 Vopsire cu pulbere in camp electrostatic: culori RAL; La cerere: anodizat negru-EV 6, maro EV5, auriu EV3, otel inox periat, argintiu lucios
Tipuri de tocuri	Toc din aluminiu; Toc din lemn
Grosimea usii de sticla	8mm; 10mm;
Grosimea usilor din lemn	41mm; 55mm
Grosimea usilor cu sticla dubla	41mm; 55mm; 100mm
Toleranta - pe inaltime	+/- 8 mm
Toleranta - pe latime	+/- 3 mm
Izolatie acustica	geam securizat 4 - securizat 6 - 37 dB geam laminat 3.1.3 - securizat 6 - 38 dB



Wooden door with double glazed Twinglass module



Double glazed DIVIDO Twinglass partition with wooden doors

## DIVIDO TWINGLASS

DIVIDotwinglass is a non-loadbearing partitioning system, double glazed in which the bi block modules made of glass panels mounted in the aluminum frame are fixed on the steel basic structure. The frames with glass are fixed to the basic structure by means of hooks mounted on back of the aluminum frame.

The float or ultra-clear window, tempered or laminated, has a thickness of 4, 5, 6 or 8 mm and it is mounted by means of the coextruded fitting in the aluminum frame. The glass can be mechanically sandblasted, decorated by applying decorative foil or by printing.

Aluminum profiles that form the panel frame are finished by anodizing or painting in electrostatic field in RAL colors.

The basic structure is made of galvanized steel sheet profiles, processed by cold plastic deformation. The pillars of the basic structure are provided with an telescopic adjustment on height.

The panels fixing is hidden, without visible profiles on the front panels with a gap of 6 mm between the panels or between the panels and the other elements of the system.

The sound insulation up to 38 dB is obtained by using a system of gaskets mounted on the basic structure and by using glass of various thicknesses.

The basic structure allows the installation of cables and electrical installations inside the wall.

The assembly time is reduced due to the prefabricated panels and basic structure specially designed.

The disassembly of the panels is done without the need of special tools or devices, by simply lifting the panel by 5 mm.

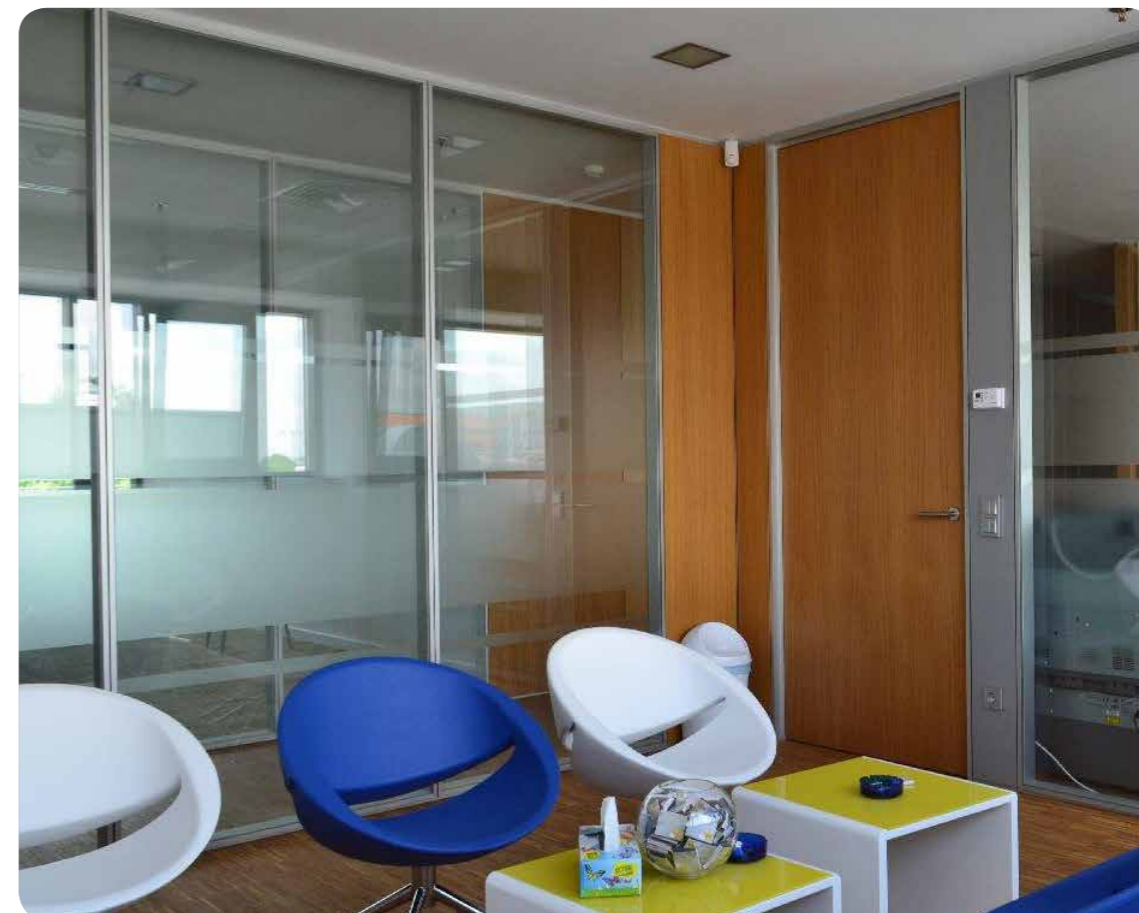
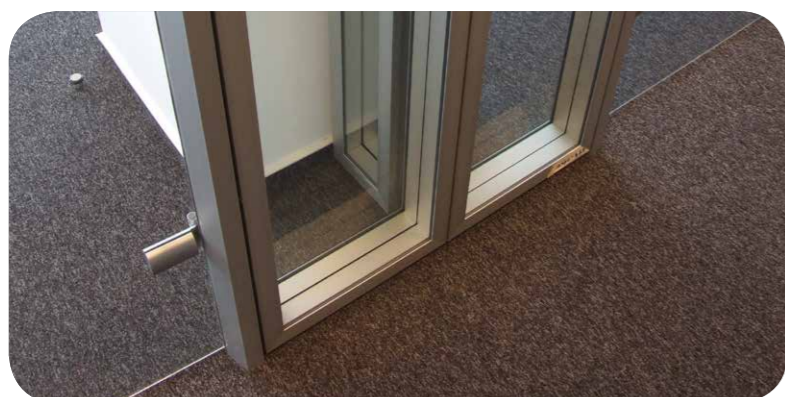
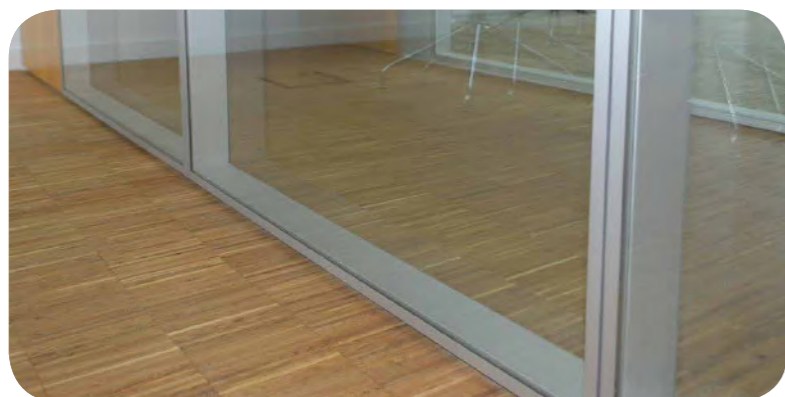
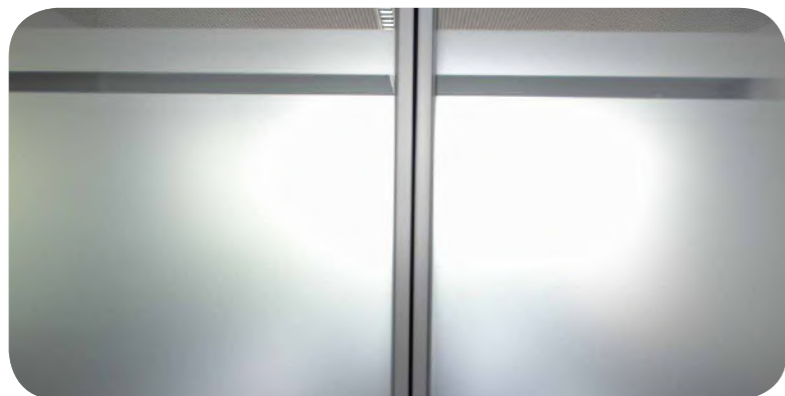
DIVIDotwinglass is a partitioning wall that can be demounted and relocated with minimal loss if the sizes of the new location are within the tolerance limit of the system.

The profile for the ceiling and floor fixing allows the taking over of the dimensional and execution tolerances as well as of the building movement.

The DIVIDotwinglass system may be combined with doors, connection elements and components of all TECHO partitioning walls.

Between the two glass sheets of the system, one can mount blinds of 25mm width.

Construction type	Double glazed
Mounting visible profile - sizes	Height: 53 - 60mm; Thickness: 100mm
Door frame width	100mm for the 33760 frame
Maximum height of the glass wall	3000mm
Width of the glass modules	300 - 1300mm
Average weight	26-35kg/mp
Types of joints between glass panels	Sup/Inf. Profiles made of Adonized Aluminum and Stainless steel mullions on which the panels are fixed with Aluminum hooks
Types or panels	Tempered glass of 4/5/6/8mm Tempered and Laminated glass of 6,38mm; 8,38mm Tempered and Acoustic laminated glass of 8,76mm
Finisaj profile aluminiu	Standard: anodizat-gri EV1 Vopsire cu pulbere in camp electrostatic: culori RAL; La cerere: anodizat negru-EV 6, maro EV5, auriu EV3, otel inox periat, argintiu lucios
Types of frames	Aluminum frame; Wooden frame
Glass doors thickness	8mm; 10mm;
Wooden doors thickness	41mm; 55mm
Double glazed glass doors thickness	41mm; 55mm; 100mm
Tolerance - on height	+/- 8 mm
Tolerance - on lateral	+/- 3 mm
Soundproofing	Tempered glass 4 - tempered 6 - 37 dB Laminated glass - tempered glass 6 - 38 dB



Divido Twinglass system



Divido Twinglass system with opaque modules

## DIVIDO GLASS

DIVIDOGlass este un sistem de compartimentare, neportant, din sticla dubla in care module bi block realizate din panouri de sticla lipite structural pe o rama de aluminiu sunt fixate pe structura de baza din otel. Panourile cu sticla sunt fixate de structura de baza cu ajutorul carligelor montate pe spatelul ramei de aluminiu. Geamul float sau ultraclar, securizat sau laminat are grosime de 6 sau 8 mm si este lipit structural de rama de aluminiu. Perimetral, pe zona in care se realizeaza lipirea structurala pe rama de aluminiu, sticla este serigrafata sau vopsita in culori RAL pentru a masca zona de lipire. Lipirea structurala se poate realiza si prin utilizarea benzilor acrilice speciale si in acest caz nu este necesara protejarea prin vopsire a zonei de lipire.

Geamul poate fi sablat mecanic sau decorat prin aplicarea de folie decorative sau prin printare. Profilele de aluminiu care formeaza rama panoului sunt finisate prin anodizare sau vopsire in camp electrostatic in culori RAL. Structura de baza este realizata din profile din tabla de otel galvanizata, prelucrata prin deformare plastica la rece. Montantii structurii de baza sunt prevazuti cu un sistem telescopic de reglare pe inaltime. Fixare panourilor este ascunsa, fara profile vizibile pe fata panourilor. Exista un nut de 6 mm intre panouri si intre panouri si celelalte elemente ale sistemului. Izolare fonica de pana la 38 dB se obtine prin utilizarea unui sistem de garnituri montate pe structura de baza si prin utilizarea sticlei cu diferite grosimi. Structura de baza permite instalarea de cabluri si instalatii electrice in interiorul peretelui. Timp de montaj redus datorita panourilor prefabricate si structurii de baza proiectata special.

Demontarea panourilor se face fara a avea nevoie de scule, unelte sau dispozitive speciale, prin simpla ridicare a panoului cu 5 mm.

DIVIDOGlass este un perete de compartimentare relocabil si poate fi demontat si relocat cu pierderi minime daca dimensiunile noii locatii se afla in limita de toleranta a sistemului. Profilul de fixare de tavan si pardoseala permite preluarea toleranțelor dimensionale si de executie precum si a miscării clădirii.

Sistemul DIVIDOGlass se poate combina cu usi, elementele de legatura si parti componente ale tuturor peretilor de compartimentare TECHO.

Intre cele doua foi de sticla ale sistemului se pot monta jaluzele cu latimea de 25 mm.

Tip constructie	Dublu placat
Profil de montaj vizibil-dimensiuni	Inaltime: 53 - 60mm; Grosimea: 100mm
Latimea tocului de usa	100mm pentru toc 33760
Inaltimea maxima a peretelui	3000mm
Latimea modulelor	300 - 1300mm
Greutatea medie	26-35kg/mp
Structura principala	Profil sup/inf din Aluminiu finisaj Anodizat si Montanti de otel inoxidabil de care sunt agatate panourile cu carlige din Aluminiu
Tipuri de panouri	Sticla securizata de 6mm; 8 mm Sticla securizata si laminata de 6,38mm; 8,38mm Sticla securizata si laminata acustica de 8,76mm
Finisaj profile aluminiu	Standard: anodizat-gri EV1 Vopsire cu pulbere in camp electrostatic: culori RAL; La cerere: anodizat negru-EV 6, maro EV5, auriu EV3, otel inox periat, argintiu lucios
Serigrafie perimetrala	Finisaj standard: gri -RAL 9006, alb -RAL 9016, negru; La cerere culori RAL
Banda acrilica pentru lipirea perimetrala	Gri-similar RAL 9007, alb si negru
Tipuri de tocuri	Toc din aluminiu; Toc din lemn
Grosimea usi de sticla	8mm; 10mm;
Grosimea usilor din lemn	41mm; 55mm
Grosimea usilor cu sticla dubla	41mm; 55mm; 100mm
Toleranta - pe inaltime	+/- 8 mm
Toleranta - pe latime	+/- 3 mm
Izolatie acustica	netestat

## DIVIDO GLASS

DIVIDOGlass is a non-loadbearing partitioning system, double glazed, in which the bi block modules made of glass panels structurally glued on an aluminum frame are fixed on the steel basic structure. The wooden panels are fixed to the basic structure by means of hooks mounted on back of the aluminum frame.

The float or ultra-clear glass, tempered or laminated, has thickness of 6 or 8 mm and it is structurally glued on the aluminum frame.

Perimetral, the area where the structural gluing is made on the aluminum frame, the glass is screen printed or painted in RAL colors to cover the gluing area. The structural gluing can also be achieved through the use of special acrylic strips and in this case it is not necessary to protect the painting to gluing area. The glass can be mechanically sandblasted or decorated by applying decorative foil or by printing.

The aluminum profiles that form the glass panel frame are finished by anodizing or painting in electrostatic field in RAL colors.

The basic structure is made of galvanized steel sheet profiles, processed by cold plastic deformation. The pillars of the basic structure are provided with an telescopic adjustment on height.

Panels fixing is hidden, without visible profiles on the front of the panels. It exists a gap of 6 mm between the panels and between the panels and the other elements of the system.

The sound insulation up to 38 dB is obtained by using a system of gaskets mounted on the basic structure and by using glass of various thicknesses.

The basic structure allows the installation of cables and electrical installations inside the wall. The assembly time is reduced due to the prefabricated panels and basic structure specially designed.

The disassembly of the panels is done without the need of special tools or devices, by simply lifting the panel by 5 mm.

DIVIDOGlass is a partitioning wall that can be demounted and relocated with minimal loss if the sizes of the new location are within the tolerance limit of the system.

The profile for the ceiling and floor fixing allows the taking over of the dimensional and execution tolerances as well as of the building movement. The DIVIDOGlass system may be combined with doors, connection elements and components of all TECHO partitioning walls.

Between the two glass sheets of the system, one can mount blinds of 25mm width.

Construction type	Double glazed
Mounting visible profile - sizes	Height: 53 - 60mm; Thickness: 100mm
Door frame width	100mm for the 33760 frame
Maximum height of the glass wall	3000mm
Width of the glass modules	300 - 1300mm
Average weight	26-35kg/mp
Types of joints between glass panels	Sup/Inf. Profiles made of Anodized Aluminum and Stainless steel mullions on which the panels are fixed with Aluminum hooks
Types or panels	Tempered glass of 6mm; 8mm Tempered and Laminated glass of 6,38mm; 8,38mm Tempered and Acoustic laminated glass of 8,76mm
Finisaj profile aluminiu	Standard: anodizat-gri EV1 Vopsire cu pulbere in camp electrostatic: culori RAL; La cerere: anodizat negru-EV 6, maro EV5, auriu EV3, otel inox periat, argintiu lucios
Perimetral printing	Standard finish: grey-RAL 9006, white -RAL 9016, black; RAL colors upon request
Acrylic tape for gluing the glass on perimeter	Grey - similar RAL 9007, black and white
Types of frames	Aluminum frame; Wooden frame
Glass doors thickness	8mm; 10mm;
Wooden doors thickness	41mm; 55mm
Double glazed glass doors thickness	41mm; 55mm; 100mm
Tolerance - on height	+/- 8 mm
Tolerance - on lateral	+/- 3 mm
Soundproofing	untested



Double glazed DIVIDOGlass partition with wooden doors



Double glazed DIVIDO Twinglass partition with wooden doors

## DIVIDO UNIGLASS

DIVIDotwinglass este un sistem de compartimentare, neportant, dintr-o sigura foaie de sticla in care modulele bi block sunt fixate pe structura de baza din otel . Ramele care formeaza panourile sunt fixate de structura cu ajutorul carligelor montate pe spatele ramei de aluminiu.

Geamul float sau ultraclar, securizat sau laminat are grosime de 5, 6 sau 8 mm si este montat pe structura de baza , intre cele doua rame de aluminiu. Geamul poate fi sablat mecanic sau decorat prin aplicarea de folie decorativa sau prin printare.

Profilele de aluminiu care formeaza rama panoului sunt finisate prin anodizare sau vopsire in camp electrostatic in culori RAL.

Structura de baza este realizata din profile din tabla de otel galvanizata, prelucrata prin deformare plastica la rece. Montantii structurii de baza sunt prevazuti cu un sistem telescopic de reglare pe inaltime. Fixare panourilor este ascunsa, fara profile vizibile pe fata panourilor. Exista un nut de 6 mm intre panouri si intre panouri si celelalte elemente ale sistemului.

Izolarea fonica de pana la 38 dB se obtine prin utilizarea unui sistem de garnituri montate pe structura de baza si prin utilizarea sticlei cu diferite grosimi. Structura de baza permite instalarea de cabluri si instalatii electrice in interiorul peretelui. Timp de montaj redus datorita panourilor prefabricate si structurii de baza proiectata special.

Demontarea panourilor se face fara a avea nevoie de scule, unelte sau dispozitive speciale, prin simpla ridicare a panoului cu 5 mm.

DIVIDotwinglass este un perete de compartimentare relocabil si poate fi demontat si relocat cu pierderi minime daca dimensiunile noii locatii se afla in limita de toleranta a sistemului. Profilul de fixare de tavan si pardoseala permite preluarea toleranțelor dimensionale si de executie precum si a miscarii cladirii. Sistemul DIVIDotwinglass se poate combina cu usi, elementele de legatura si parti componente ale tuturor peretilor de compartimentare TECHO.

Tip constructie	Simplu placat
Profil de montaj vizibil-dimensiuni	Inaltime: 53 - 60mm; Grosimea:100mm
Latimea tocului de usa	100mm pentru toc 33760
Inaltimea maxima a peretelui	3000mm
Latimea modulelor	300 - 1300mm
Greutate medie	26-35kg/mp
Structura principala	Profil sup/inf din Aluminiu finisaj Anodizat si Montanti de otel inoxidabil de care sunt agatate panourile cu carlige din Aluminiu
Tipuri de panouri	Sticla securizata de 6mm; 8mm Sticla securizata si laminata de 6,38mm; 8,38mm Sticla securizata si laminata acustica de 8,76mm
Finisaj profile aluminiu	Standard: anodizat-gri EV1 Vopsire cu pulbere in camp electrostatic: culori RAL; La cerere: anodizat negru-EV 6, maro EV5, auriu EV3, otel inox periat, argintiu lucios
Tipuri de tocuri	Toc din aluminiu; Toc din lemn
Grosimea usi de sticla	8mm; 10mm;
Grosimea usilor din lemn	41mm; 55mm
Grosimea usilor cu sticla dubla	41mm; 55mm; 100mm
Toleranta - pe inaltime	+/- 8 mm
Toleranta - pe latime	+/- 3 mm
Izolatie acustica	netestat

## DIVIDO UNIGLASS

DIVIDotwinglass is a non-loadbearing partitioning system, made of one glass sheet in which the bi block modules are fixed on the steel basic structure. The frames forming the panels are fixed to the structure by means of hooks mounted on back of the aluminum frame.

The float or ultra-clear glass, tempered or laminated, has thickness of 5, 6 or 8 mm and it is mounted on the basic structure, between the two aluminum frames. The glass can be mechanically sandblasted, decorated by applying decorative foil or by printing.

Aluminum profiles that form the panel frame are finished by anodizing or painting in electrostatic field in RAL colors.

The basic structure is made of galvanized steel sheet profiles, processed by cold plastic deformation. The pillars of the basic structure are provided with an telescopic adjustment on height.

Panel fixing is hidden, without visible profiles on the front of the panels. It exists a gap of 6 mm between the panels and between the panels and the other elements of the system.

The sound insulation up to 38 dB is obtained by using a system of gaskets mounted on the basic structure and by using glass of various thicknesses. The basic structure allows the installation of cables and electrical installations inside the wall.

The assembly time is reduced due to the prefabricated panels and basic structure specially designed.

The disassembly of the panels is done without the need of special tools or devices, by simply lifting the panel by 5 mm.

DIVIDotwinglass is a partitioning wall that can be demounted and relocated with minimal loss if the sizes of the new location are within the tolerance limit of the system.

The profile for the ceiling and floor fixing allows the taking over of the dimensional and execution tolerances as well as of the building movement. The DIVIDotwinglass system may be combined with doors, connection elements and components of all TECHO partitioning walls.

Construction type	Single glazed
Mounting visible profile - sizes	Height: 53 - 60mm; Thickness: 100mm
Door frame width	100mm for the 33760 frame
Maximum height of the glass wall	3000mm
Width of the glass modules	300 - 1300mm
Average weight	26-35kg/mp
Types of joints between glass panels	Sup/Inf. Profiles made of Anodized Aluminum and Stainless steel mullions on witch are the panels are fixed with Aluminum hooks
Types or panels	Tempered glass of 6mm; 8mm Tempered and Laminated glass of 6,38mm; 8,38mm Tempered and Acoustic laminated glass of 8,76mm
Finisaj profile aluminiu	Standard: anodizat-gri EV1 Vopsire cu pulbere in camp electrostatic: culori RAL; La cerere: anodizat negru-EV 6, maro EV5, auriu EV3, otel inox periat, argintiu lucios
Types of frames	Aluminum frame; Wooden frame
Glass doors thickness	8mm; 10mm;
Wooden doors thickness	41mm; 55mm
Double glazed glass doors thickness	41mm; 55mm; 100mm
Tolerance - on height	+/- 8 mm
Tolerance - on lateral	+/- 3 mm
Soundproofing	untested

DOORS





DG door with V10 double glazed partition

O gama larga de usi batante si usi glisante este posibila pentru aceasta gama de partitii. Usile pot fii pline din lemn, 41, 55 sau 100 mm grosime, din sticlaclara, securizata de 10 mm grosime. Atat usile batante cat si cele glisante pot fi simple, duble, pot fi pe toata inaltimea sau pot fi prevazute cu supralumina. Usile de sticla sunt fara rama metalica si pot fi decorate cu folie autocolanta in diverse design-uri.

Versatilitatea acestor usi precum si multitudinea finisajelor ajuta in crearea unui design unitar al spatiului dumneavoastra.

This partition range comes with a wide range of swing and sliding doors. The doors are available in wood, 41, 55, 100 mm thick, or in clear, tempered glass, 10 mm thick. Both sliding and swing doors are available as single or double, full-height or with overhead glass type modules. Frameless glass doors can be decorated with self-adhesive film in various designs.

The versatility of these doors and the many finishes help create a unified design of your space.

DG door detail





Single glazed glass door





Single glazed glass door with V10 glass partition



WD55 doors with wooden technical panels and V10 system



COSMIN DRAGOMIR .INFO

WD55 doors with wooden technical panels and V10 system



COSMIN DRAGOMIR .INFO

DOORS

DOORS



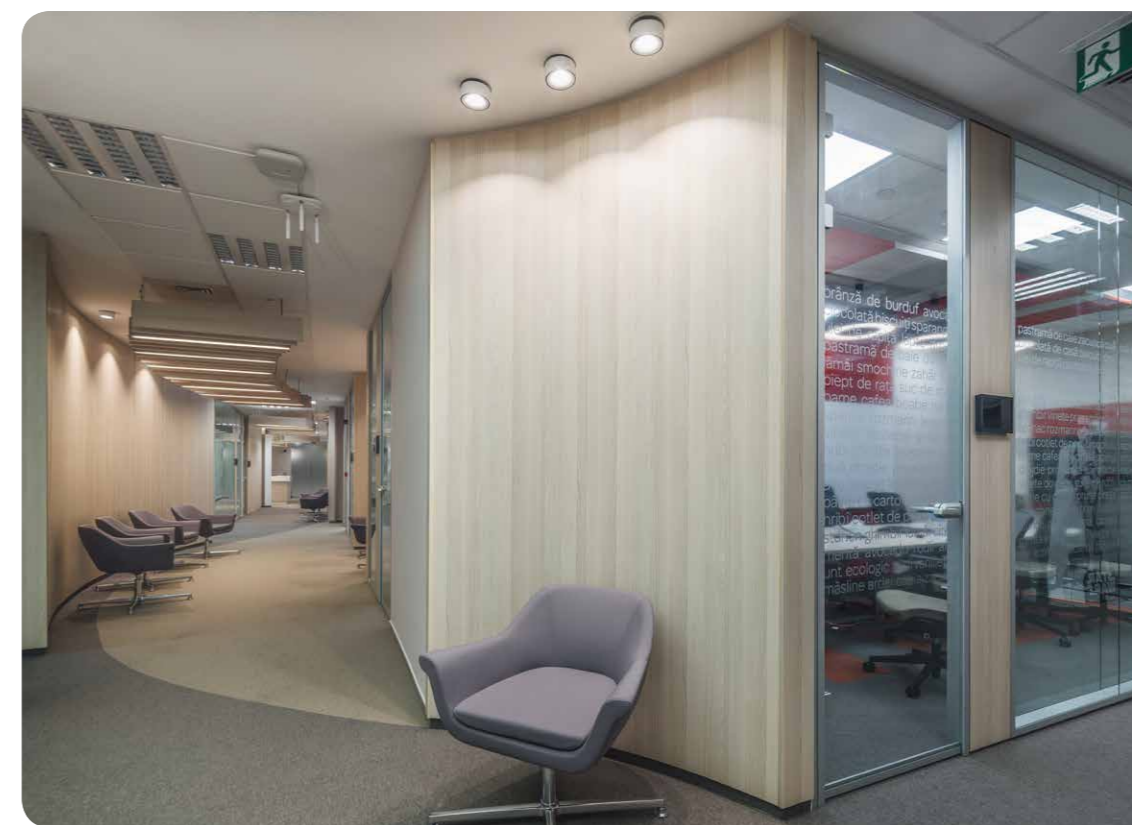
G10 single glazed door with wooden technical panels and V10 system



DG double glazed glass door with technical panel and V10 system



G10 single glazed door with Divido Panel and V10 system



G10 single glazed door with Divido Panel and V10 system



SKY G10 0

Usa simplu placata realizata cu o singura foaie de sticla, securizata, 10 mm grosime, finisaj clar, montata pe un toc de Aluminiu, finisaj Anodizat sau vopsit in culori RAL, de 54 mm grosime.

Accesoriile standard de feronerie sunt: Balamale WSS 2/3 pe foaia de usa; Broasca pentru butuc si maner WSS; Cilindru BKS 35/35; Opritor de pardoseala.

Supralumina realizata din sticla si se monteaza in profilele peretelui de sticla.



Single glazed door made with one tempered glass panel, 8/10 mm thick, clear finish installed on an Aluminum frame, Anodized or painted in RAL colors finish.

Standard Ironmongery: Hinges WSS 2/3 pcs on door leaf; Lock for cylinder and handle WSS; Cylinder BKS 35/35; Door stopper.

The overpanel is made of glass and it is installed in the glass partition profiles.



SKY WD55 FH

Usa de lemn, celulara placata cu MDF pe ambele fete, foaia de usa are o grosime de 55 mm, finisaj lemn sau vopsite in culori RAL, montata pe un toc de lemn, finisaj lemn sau vopsit in culori RAL, de 55 mm grosime.

Accesoriile standard de feronerie sunt: Balamale ascunse 2/3 pe foaia de usa; Broasca pentru butuc si maner Tipo Inox; Cilindru BKS 35/40; Opritor de pardoseala.

Supralumina realizata din lemn, 55 mm grosime.



Wooden door, honeycomb interior plated on both sides with MDF, the door leaf is 55 mm thick, woden or RAL colors finish, installed on an wooden frame, wood or RAL colors finish.

Standard Ironmongery: Hiden Hinges 2/3 pcs on door leaf; Lock for cylinder and handle Tipo Inox; Cylinder BKS 35/40; Door stopper.

The overpanel is made wood, 55 mm thick.



SKY WD55 0

Usa de lemn, celulara placata cu MDF pe ambele fete, 55 mm grosime, finisaj lemn sau vopsite in culori RAL, montata pe un toc de Aluminiu, finisaj Anodizat sau vopsit in culori RAL, grosime toc 100 mm grosime.

Accesoriile standard de feronerie sunt: Balamale ascunse sau Columbus 2/3 pe foaia de usa; Broasca pentru butuc si maner Tipo Inox; Cilindru BKS 40/45; Opritor de pardoseala.

Usa are modul tehnic de lemn montat in interiorul tocului, grosime 55 mm.



Wooden door, honeycomb interior plated on both sides with MDF, 55 mm thick, wooden or RAL colors finish, installed on an Aluminum frame, Anodized or RAL colors finish.

Standard Ironmongery: Hiden Hinges or Columbus 2/3 pcs on door leaf; Lock for cylinder and handle Tipo Inox; Cylinder BKS 40/45; Door stopper.

The has a wooden technical module installed inside the door frame, 55 mm thick.

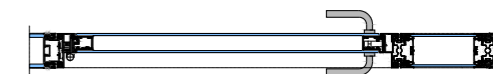


V14 DG 900 400 Blinds

Usa pe toata inaltimea, in doua canate, realizata din doua foi de sticla, securizata, finisaj clar, 6+6 mm grosime, lipite pe o rama de Aluminiu finisaj. Grosime foii de usa este de 55 mm. Anodizat sau vopsitorie in culori RAL. Sticla are un chenar perimetral vopsit sau serigrafat in culori RAL. Foaia de usa este montata pe un toc de Aluminiu, finisaj Anodizat sau vopsit in culori RAL, de 100 mm grosime.

Accesoriile standard de feronerie sunt: Balamale si suporti SIMONSWERK 2/3 pe foaia de usa; Broasca pentru butuc si maner L-form Tipo Inox; Cilindru BKS 40/45; Prag cazator; Opritor in pardoseala.

Usa are la interior jaluzele de aluminiu.



Double full-height door made with two tempered glass panels, 6+6 mm thick, clear finish, glued on an Aluminum frame, Anodized or painted in RAL colors finish. The door leaf thickness is 55 mm. The glass panels are with a perimeter painted or screen printing in RAL colors. The door leaf is installed on an Aluminum frame with Anodized or painted in RAL colors finish, 100 mm thick.

Standard Ironmongery: Hinges SIMONSWERK 2/3 pcs on door leaf; Lock for cylinder and handle L-Form Tipo Inox; Cylinder BKS 40/45; Door seal; Door stopper.

The door has interior aluminum blinds.



V14 DG TECH GLASS FH0

Usa dublu placata realizata din doua foi de sticla, securizata, 6+6 mm grosime, finisaj clar, lipite pe o rama de Aluminiu, 55 mm grosime. Sticla are un chenar perimetral vopsit sau serigrafat in culori RAL. Foaia de usa este montata pe un toc de Aluminiu, finisaj Anodizat sau vopsit in culori RAL, de 100 mm grosime.

Accesoriile standard de feronerie sunt: Balamale si suporti SIMONSWERK 2/3 pe foaia de usa; Broasca pentru butuc si maner L-form Tipo Inox; Cilindru BKS 40/45; Prag cazator; Opritor in pardoseala.

Usa are modul tehnic cu sticla dubla realizat pe sistem de compartimentare Divido Twinnglass si supralumina montata in interiorul tocului.



Double glazed door made with two tempered glass panels, 6+6 mm thick, clear finish, glued on an Aluminum frame, Anodized or painted in RAL colors finish, 55 mm thick. The glass panels are with a perimeter painted or screen printing in RAL colors. The door leaf is installed on an Aluminum frame with Anodized or painted in RAL colors finish, 100 mm thick.

Standard Ironmongery: Hinges SIMONSWERK 2/3 pcs on door leaf; Lock for cylinder and handle L-Form Tipo Inox; Cylinder BKS 40/45; Door seal; Door stopper.

The door has a double glazed technical module made with Divido Twinnglass system and overpanel installed inside the door frame.

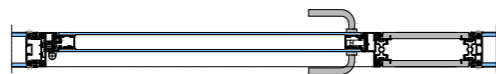


V14 DG TECH PANEL FH

Usa pe toata inaltimea, dublu placata realizata din doua foi de sticla, securizata, 6+6 mm grosime, finisaj clar, lipite pe o rama de Aluminiu, 55 mm grosime. Sticla are un chenar perimetral vopsit sau serigrafat in culori RAL. Foaia de usa este montata pe un toc de Aluminiu, finisaj Anodizat sau vopsit in culori RAL, de 100 mm grosime.

Accesoriile standard de feronerie sunt: Balamale si suporti SIMONSWERK 2/3 pe foaia de usa; Broasca pentru butuc si maner L-form Tipo Inox; Cilindru BKS 40/45; Prag cazator; Opritor in pardoseala.

Usa are modul tehnic, opac, realizat pe sistem de compartimentare Divido Panel



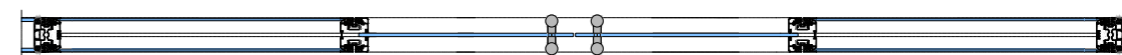
Double glazed full height door made with two tempered glass panels, 6+6 mm thick, clear finish, glued on an Aluminum frame, Anodized or painted in RAL colors finish, 55 mm thick. The glass panels are with a perimeter painted or screen printing in RAL colors. The door leaf is installed on an Aluminum frame with Anodized or painted in RAL colors finish, 100 mm thick.

Standard Ironmongery: Hinges SIMONSWERK 2/3 pcs on door leaf; Lock for cylinder and handle L-Form Tipo Inox; Cylinder BKS 40/45; Door seal; Door stopper.

The door has a double glazed, opaque technical module made with Divido Panel system.



DIVIDO TG G 10 Sliding



Usa dubla glisanta realizata din doua foi de sticla, securizata, 10 mm grosime, finisaj clar, ce gliseaza in module dublu placate cu sticla si profile din Aluminiu, finisaj Anodizat sau vopsit in culori RAL, de 100 mm grosime pe sistem Divido Twinnglass.

Accesoriile standard de feronerie sunt: Kit glisare Perlan Geze, sina glisare Perlan si manere tragatoare tip H, 350 mm lungime, finisaj inox.

Double sliding glass door made with two tempered glass panels, 10 mm thick, clear finish, that are sliding in double glazed glass modules Aluminum Anodized or painted in RAL colors finish, 100 mm thick, Divido Twinnglass system.

Standard Ironmongery: Perlan sliding kit; Perlan sliding rail and H type handles, 350 mm length, stainless steel finish.



V14 DG 100 33760

Usa pe toata inaltimea dublu placata realizata din doua foi de sticla, securizata, 6+6 mm grosime, finisaj clar, fixate pe o rama de Aluminiu finisaj Anodizat sau vopsitorie in culori RAL, 100 mm grosime. Foaia de usa este montata pe un toc de Aluminiu , finisaj Anodizat sau vopsit in culori RAL, de 100 mm grosime.  
 Accesoriile standard de feronerie sunt: Balama pivot; Broasca pentru butuc si maner C-form; Cilindru BKS 45/80; Prag cazator; Opritor in pardoseala.



Full-height double glazed door made with two tempered glass panels, 6+6 mm thick, clear finish, fixed on an Aluminum frame, Anodized or painted in RAL colors finish, 100 mm thick. The door leaf is installed on an Aluminum frame with Anodized or painted in RAL colors finish, 100 mm thick.  
 Standard Ironmongery: Pivot hinge; Lock for cylinder and handle C-Form; Cylinder BKS 45/80; Door seal; Door stopper.



V14 DG 100 31459

Usa pe toata inaltimea, dublu placata realizata din doua foi de sticla, securizata, 6+6 mm grosime, finisaj clar, lipite pe o rama de Aluminiu finisaj Anodizat sau vopsitorie in culori RAL, 100 mm grosime. Foaia de usa este montata pe un toc de Aluminiu , finisaj Anodizat sau vopsit in culori RAL, de 100 mm grosime.  
 Accesoriile standard de feronerie sunt: Balama pivot; Broasca pentru butuc si maner C-form; Cilindru BKS 45/80; Prag cazator; Opritor in pardoseala.

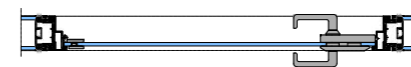


Full-height double glazed door made with two tempered glass panels, 6+6 mm thick, clear finish, fixed on an Aluminum frame, Anodized or painted in RAL colors finish, 100 mm thick. The door leaf is installed on an Aluminum frame with Anodized or painted in RAL colors finish, 100 mm thick.  
 Standard Ironmongery: Pivot hinge; Lock for cylinder and handle C-Form; Cylinder BKS 45/80; Door seal; Door stopper.



V14 G10 FH

Usa pe toata inaltimea, simplu placata realizata cu o singura foaie de sticla, securizata, 8/10 mm grosime, finisaj clar, montata pe un toc de Aluminiu, finisaj Anodizat sau vopsit in culori RAL, de 100 mm grosime.  
 Accesoriile standard de feronerie sunt: Balamale WSS 2/3 pe foaia de usa; Broasca pentru butuc si maner WSS; Cilindru BKS 35/35; Opritor de pardoseala.



Full-height, single glazed door made with one tempered glass panel, 8/10 mm thick, clear finish installed on an Aluminum frame, Anodized or painted in RAL colors finish, 100 mm thick.  
 Standard Ironmongery: Hinges WSS 2/3 pcs on door leaf; Lock for cylinder and handle WSS; Cylinder BKS 35/35; Door stopper.



V14 G10 FHO

Usa pe toata inaltimea, simplu placata realizata cu o singura foaie de sticla, securizata, 8/10 mm grosime, finisaj clar, montata pe un toc de Aluminiu, finisaj Anodizat sau vopsit in culori RAL, de 100 mm grosime.  
 Accesoriile standard de feronerie sunt: Balamale WSS 2/3 pe foaia de usa; Broasca pentru butuc si maner WSS; Cilindru BKS 35/35; Opritor de pardoseala.  
 Usa are supralumina realizata dintr-o singura foaie de sticla, securizata, de 10 mm grosime fixata in interiorul tocului.



Full-height, single glazed door made with one tempered glass panel, 8/10 mm thick, clear finish installed on an Aluminum frame, Anodized or painted in RAL colors finish, 100 mm thick.  
 Standard Ironmongery: Hinges WSS 2/3 pcs on door leaf; Lock for cylinder and handle WSS; Cylinder BKS 35/35; Door stopper.  
 The door has overpanel made of a single tempered glass panel, 10 mm thick, fixed inside the door frame.



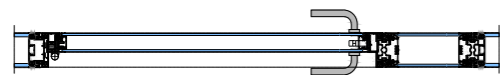


V14 DGP TECH GLASS O

Usa dublu placata realizata din doua foi de sticla, securizata, 6+6 mm grosime, finisaj clar, fixate intr-o rama de Aluminiu finisaj Anodizat sau vopsitorie in culori RAL, 55 mm grosime. Foaia de usa este montata pe un toc de Aluminiu , finisaj Anodizat sau vopsit in culori RAL, de 100 mm grosime.

Accesoriile standard de feronerie sunt: Profil Balamala pivot; Broasca pentru butuc si maner L-form Tipo Inox; Cilindru BKS 40/45; Prag cazator; Opritor in pardoseala.

Usa are modul tehnic cu sticla dubla realizat pe sistem de compartimentare Divido Twinnglass si supralumina in sistemul de compartimentare.



Double glazed door made with two tempered glass panels, 6+6 mm thick, clear finish, fixed in an Aluminum frame, Anodized or painted in RAL colors finish, 55 mm thick. The door leaf is installed on an Aluminum frame with Anodized or painted in RAL colors finish, 100 mm thick.

Standard Ironmongery: Pivot hinge profile; Lock for cylinder and handle L-Form Tipo Inox; Cylinder BKS 40/45; Door seal; Door stopper. The door has a double glazed technical module made with Divido Twinnglass system and overpanel in the partition system.

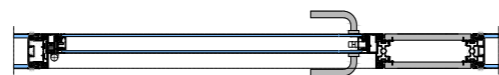


V14 DGP TECH PANEL FH

Usa pe toata inaltimea, dublu placata realizata din doua foi de sticla, securizata, 6+6 mm grosime, finisaj clar, fixate intr-o rama de Aluminiu finisaj Anodizat sau vopsitorie in culori RAL, 55 mm grosime. Foaia de usa este montata pe un toc de Aluminiu , finisaj Anodizat sau vopsit in culori RAL, de 100 mm grosime.

Accesoriile standard de feronerie sunt: Profil Balamala pivot; Broasca pentru butuc si maner L-form Tipo Inox; Cilindru BKS 40/45; Prag cazator; Opritor in pardoseala.

Usa are modul tehnic, opac, realizat pe sistem de compartimentare Divido Panel



Full-height double glazed door made with two tempered glass panels, 6+6 mm thick, clear finish, fixed in an Aluminum frame, Anodized or painted in RAL colors finish, 55 mm thick. The door leaf is installed on an Aluminum frame with Anodized or painted in RAL colors finish, 100 mm thick.

Standard Ironmongery: Pivot hinge profile; Lock for cylinder and handle L-Form Tipo Inox; Cylinder BKS 40/45; Door seal; Door stopper. The door has a double glazed, opaque technical module made with Divido Panel system.



V14 WD45 O

Usa de lemn, pe toata inaltimea, celulara placata cu MDF pe ambele fete, foaia de usa are o grosime de 45 mm, finisaj lemn sau vopsite in culori RAL, montata pe un toc de Aluminiu, finisaj Anodizat sau vopsit in culori RAL, grosime toc 100 mm grosime.

Accesoriile standard de feronerie sunt: Balamale ascunse sau Columbus 2/3 pe foaia de usa; Broasca pentru butuc si maner Tipo Inox; Cilindru BKS 40/45; Opritor de pardoseala.

Usa are supralumina de lemn, grosime 100 mm, pe sistem Divido Panel montata deasupra tocului.



Wooden door, honeycomb interior plated on both sides with MDF, the door leaf is 45 mm thick, wooden or RAL colors finish, installed on an Aluminum frame, Anodized or RAL colors finish, 100 mm thick.

Standard Ironmongery: Hidden Hinges or Columbus 2/3 pcs on door leaf; Lock for cylinder and handle Tipo Inox; Cylinder BKS 40/45; Door stopper. The door has a wooden overpanel, 100 mm thick, Divido Panel system, installed in the partition.



V14 WD55 O

Usa de lemn, pe toata inaltimea, celulara placata cu MDF pe ambele fete, foaia de usa are o grosime de 55 mm, finisaj lemn sau vopsite in culori RAL, montata pe un toc de Aluminiu, finisaj Anodizat sau vopsit in culori RAL, grosime toc 100 mm grosime.

Accesoriile standard de feronerie sunt: Balamale ascunse sau Columbus 2/3 pe foaia de usa; Broasca pentru butuc si maner Tipo Inox; Cilindru BKS 40/45; Opritor de pardoseala.

Usa are supralumina de lemn, grosime 100 mm, pe sistem Divido Panel montata deasupra tocului.



Wooden door, honeycomb interior plated on both sides with MDF, the door leaf is 55 mm thick, wooden or RAL colors finish, installed on an Aluminum frame, Anodized or RAL colors finish, 100 mm thick.

Standard Ironmongery: Hidden Hinges or Columbus 2/3 pcs on door leaf; Lock for cylinder and handle Tipo Inox; Cylinder BKS 40/45; Door stopper. The door has a wooden overpanel, 100 mm thick, Divido Panel system, installed in the partition.



V14 WD45 FH



V14 WD45 FH0

Usa de lemn, pe toata inaltimea, celulara placata cu MDF pe ambele fete, foaia de usa are o grosime de 45 mm, finisaj lemn sau vopsite in culori RAL, montata pe un toc de Aluminiu, finisaj Anodizat sau vopsit in culori RAL, grosime toc 100 mm grosime.

Accesoriiile standard de feronerie sunt: Balamale ascunse sau Columbus 2/3 pe foaia de usa; Broasca pentru butuc si maner Tipo Inox; Cilindru BKS 40/45; Opritor de pardoseala.

Usa de lemn, pe toata inaltimea, celulara placata cu MDF pe ambele fete, foaia de usa are o grosime de 45 mm, finisaj lemn sau vopsite in culori RAL, montata pe un toc de Aluminiu, finisaj Anodizat sau vopsit in culori RAL, grosime toc 100 mm grosime.

Accesoriiile standard de feronerie sunt: Balamale ascunse sau Columbus 2/3 pe foaia de usa; Broasca pentru butuc si maner Tipo Inox; Cilindru BKS 40/45; Opritor de pardoseala.

Usa are supralumina de lemn, grosime 45 mm, montata in interiorul tocului.



Full-height wooden door, honeycomb interior plated on both sides with MDF, the door leaf is 45 mm thick, wooden or RAL colors finish, installed on an Aluminum frame, Anodized or RAL colors finish, 100 mm thick.

Standard Ironmongery: Hidden Hinges or Columbus 2/3 pcs on door leaf; Lock for cylinder and handle Tipo Inox; Cylinder BKS 40/45; Door stopper.



Wooden door, honeycomb interior plated on both sides with MDF, the door leaf is 45 mm thick, wooden or RAL colors finish, installed on an Aluminum frame, Anodized or RAL colors finish, 100 mm thick.

Standard Ironmongery: Hidden Hinges or Columbus 2/3 pcs on door leaf; Lock for cylinder and handle Tipo Inox; Cylinder BKS 40/45; Door stopper. The door has a wooden overpanel installed inside the door frame, 45 mm thick.



V14 WD55 FH



V14 WD55 FH0

Usa de lemn, pe toata inaltimea, celulara placata cu MDF pe ambele fete, foaia de usa are o grosime de 55 mm, finisaj lemn sau vopsite in culori RAL, montata pe un toc de Aluminiu, finisaj Anodizat sau vopsit in culori RAL, grosime toc 100 mm grosime.

Accesoriiile standard de feronerie sunt: Balamale ascunse sau Columbus 2/3 pe foaia de usa; Broasca pentru butuc si maner Tipo Inox; Cilindru BKS 40/45; Opritor de pardoseala.

Usa de lemn, pe toata inaltimea, celulara placata cu MDF pe ambele fete, foaia de usa are o grosime de 55 mm, finisaj lemn sau vopsite in culori RAL, montata pe un toc de Aluminiu, finisaj Anodizat sau vopsit in culori RAL, grosime toc 100 mm grosime.

Accesoriiile standard de feronerie sunt: Balamale ascunse sau Columbus 2/3 pe foaia de usa; Broasca pentru butuc si maner Tipo Inox; Cilindru BKS 40/45; Opritor de pardoseala.

Usa are supralumina de lemn, grosime 55 mm, montata in interiorul tocului.



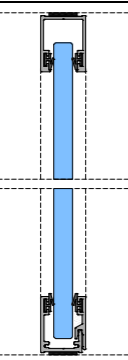
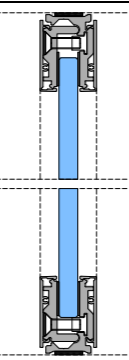
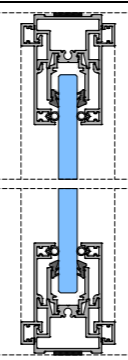
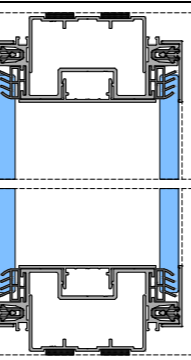
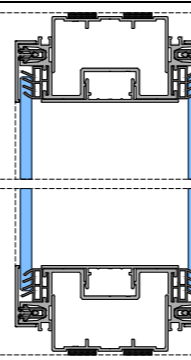
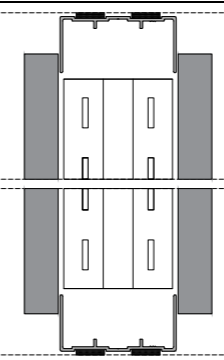
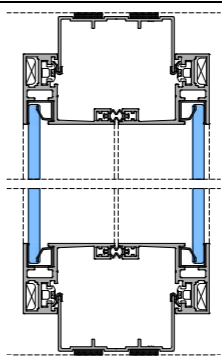
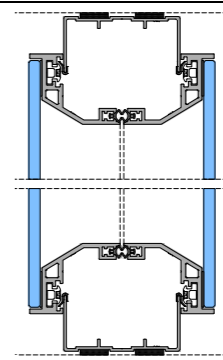
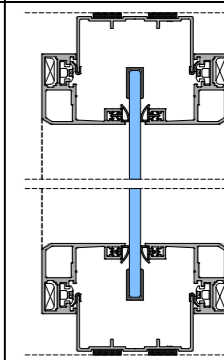
Full-height wooden door, honeycomb interior plated on both sides with MDF, the door leaf is 55 mm thick, wooden or RAL colors finish, installed on an Aluminum frame, Anodized or RAL colors finish, 100 mm thick.

Standard Ironmongery: Hidden Hinges or Columbus 2/3 pcs on door leaf; Lock for cylinder and handle Tipo Inox; Cylinder BKS 40/45; Door stopper.



Wooden door, honeycomb interior plated on both sides with MDF, the door leaf is 55 mm thick, wooden or RAL colors finish, installed on an Aluminum frame, Anodized or RAL colors finish, 100 mm thick.

Standard Ironmongery: Hidden Hinges or Columbus 2/3 pcs on door leaf; Lock for cylinder and handle Tipo Inox; Cylinder BKS 40/45; Door stopper. The door has a wooden overpanel installed inside the door frame, 55 mm thick.

General System	SKY SYSTEM			VITRUM SYSTEM		DIVIDO SYSTEM				
Type of System	SKY 30	Uniglass NT	SKY 60	Vitrum V10		Vitrum V6	Divido Panel	Divido Twinglass	Divido Glass	Divido Uniglass
Detail										
Construction type	Single Glazed	Single Glazed	Single Glazed	Double Glazed		Double Glazed	Double Glazed	Double Glazed	Double Glazed	Single Glazed
Wall thickness	24 mm	30 mm	50 mm	100 mm		100 mm	100 mm	100 mm	100 mm	100 mm
Fixing aluminum profile - Height	30 mm	40 mm	60 mm	33 - 48mm		33 - 48mm	15 - 22mm;	53 - 60mm	53 - 60mm	53 - 60mm
Average weight	31-35kg/mp	31-35kg/mp	31-35kg/mp	54-64 kg/mp		26-32 kg/mp	25-35kg/mp	26-35kg/mp	26-35kg/mp	
Types of connections between panels	Double adhesive silicone tape Black (optional transparent); Transparent polycarbonate profile; Narrow profile - 10 mm of aluminum shape "I". Finish - anodized grey.	Double adhesive silicone tape Black (optional transparent); Transparent polycarbonate profile; Narrow profile - 10 mm of aluminum shape "I". Finish - anodized grey.	Double adhesive silicone tape Black (optional transparent); Transparent polycarbonate profile; Narrow profile - 10 mm of aluminum shape "I". Finish - anodized grey.	Double adhesive silicone tape Black (optional transparency); Transparent polycarbonate profile Aluminium mullions 33 mm width.		Aluminum mullions of 33 mm width.	Sup/Inf. Profiles made of Adonized Aluminum and Stainless steel mullions on which the panels are fixed with Aluminum hooks	Sup/Inf. Profiles made of Adonized Aluminum and Stainless steel mullions on which the frames are fixed with Aluminum hooks	Sup/Inf. Profiles made of Adonized Aluminum and Stainless steel mullions on which the frames are fixed with Aluminum hooks	Sup/Inf. Profiles made of Adonized Aluminum and Stainless steel mullions on which the frames are fixed with Aluminum hooks
Types of panels	Standard float or ultra-clear tempered glass - 10mm, Laminated glass 10.38 mm, Acoustic laminated glass 10.76 mm	Standard float or ultra-clear tempered glass - 8/10/12 mm thick. Tempered and laminated glass 10.38, 12.38 mm. Acoustic tempered and laminated glass 10.76, 12.76mm.	Standard float or ultra-clear tempered glass - 10/12 mm thick. Tempered and laminated glass 10.38, 12.38 mm. Acoustic tempered and laminated glass 10.76, 12.76mm.	Standard float or ultra-clear tempered glass - 8/10/12 mm thick. Tempered and laminated glass 10.38, 12.38 mm. Acoustic tempered and laminated glass 8.76mm; 10.76mm; 12.76 mm.		Standard float or ultra-clear tempered glass - 5/6/8/10 mm thick. Tempered and laminated glass 6.38; 10,38; 12,38 mm. Acoustic tempered and laminated glass 8.76mm; 10.76mm; 12.76 mm.	Blind panels made of Wood/Metal/Composite materials Sound-absorbing panels made of wood or textiles	Tempered glass of 4/5/6/8mm Laminated glass of 6,38/8,38mm Acoustic laminated glass of 8,76mm	Tempered glass of 6/8mm Laminated glass of 6,38/8,38mm Acoustic laminated glass of 8,76mm	Tempered glass of 6/8mm Laminated glass of 6,38/8,38mm Acoustic laminated glass of 8,76mm
Maximum height of the wall	3000 mm	3450 mm	3000 mm	3450mm		3600 mm	3000 mm	3000 mm	3000 mm	3000 mm
Tolerances	+/-10mm in height and width	+/-10mm in height and width	+/-10mm in height and width	+/-11 mm in height and width		+/-11 mm in height and width	+/- 8 mm on height and +/- 3 mm on lateral	+/- 8 mm on height and +/- 3 mm on lateral	+/- 8 mm on height and +/- 3 mm on lateral	+/- 8 mm on height and +/- 3 mm on lateral
Sound insulation	35 - 38 dB	Untested	Untested	44 - 47 dB		41 - 46 dB	40 - 48 dB	37 - 38 dB	Untested	Untested

